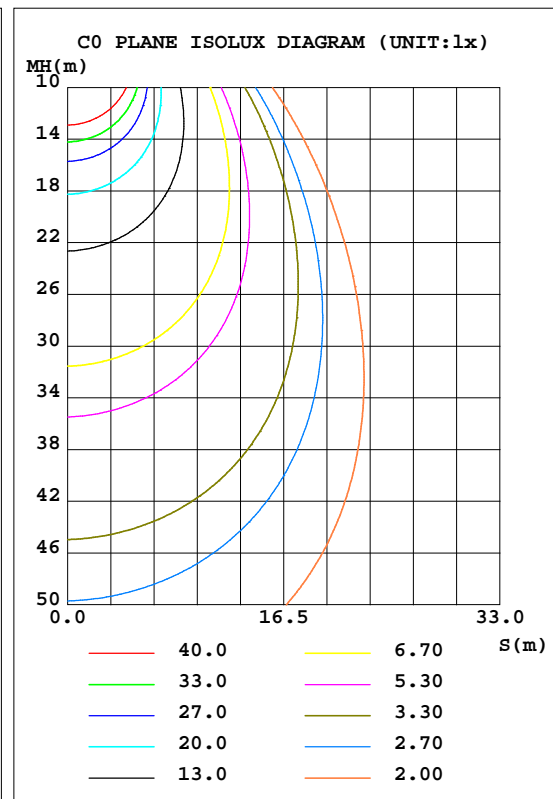
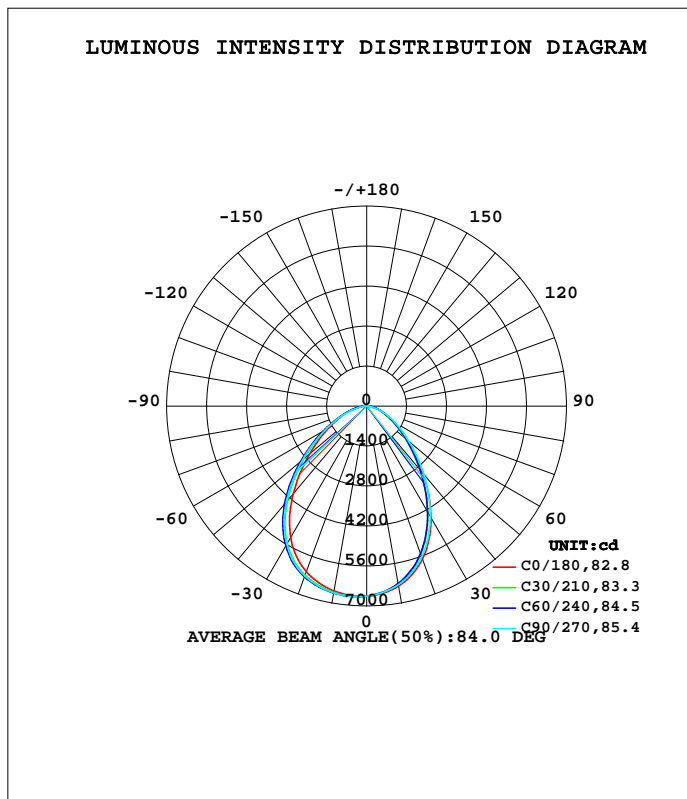


LUMINAIRE PHOTOMETRIC TEST REPORT

Test:U:220.0V I:0.5070A P:102.0W PF:0.9148 Lamp Flux:13149x1 lm		
NAME:	TYPE:	WEIGHT:
SPEC.:	DIM.:	SERIAL No.:BLD201601105P20
MFR.:	SUR.:0.08*0.22*2	Shielding Angle:

DATA OF LAMP		PHOTOMETRIC DATA Eff: 128.87 lm/W			
MODEL	0.6M-100W	I _{max} (cd)	6688	S/MH(C0/180)	1.19
NOMINAL POWER(W)		LOR(%)	100.0	S/MH(C90/270)	1.24
RATED VOLTAGE(V)		TOTAL FLUX(lm)	13149	η UP, DN(C0-180)	0.0,45.2
NOMINAL FLUX(lm)	13149	CIE CLASS	DIRECT	η UP, DN(C180-360)	0.0,54.7
LAMPS INSIDE	1	η up(%)	0.1	CIBSE SHR NOM	1.00
TEST VOLTAGE(V)		η down(%)	99.9	CIBSE SHR MAX	1.15



C Range: 0 - 360DEG
 C Interval: 15.0DEG
 Test Speed: HIGH
 Temperature:26DEG
 Operators:NEIKO
 Test Date:2016-11-05

γ Range: 0 - 180DEG
 γ Interval: 1.0DEG
 Test System:EVERFINE GO-2000B_V1 SYSTEM V2.0.350
 Humidity:60%
 Test Distance:12.218m [K=1.0000]
 Remarks: 80DEG

ZONAL FLUX DIAGRAM

ZONAL FLUX DIAGRAM:

γ	C0	C45	C90	C135	C180	C225	C270	C315	γ	Φ zone	Φ total	%lum,lamp
10	6401	6316	6353	6469	6575	6639	6639	6544	0- 10	627.6	627.6	4.77,4.77
20	5706	5491	5629	5899	6178	6339	6337	6082	10- 20	1766	2394	18.2,18.2
30	4507	4240	4465	4877	5326	5642	5599	5127	20- 30	2533	4926	37.5,37.5
40	3084	2880	3109	3519	4004	4425	4375	3743	30- 40	2697	7624	58.58
50	1894	1788	1935	2226	2607	2972	2933	2363	40- 50	2286	9910	75.4,75.4
60	1100	1037	1119	1269	1540	1736	1694	1341	50- 60	1621	11531	87.7,87.7
70	579.9	543.6	563.6	645.4	817.6	875.7	825.9	676.8	60- 70	984.9	12516	95.2,95.2
80	170.9	234.1	131.7	285.1	249.3	377.5	221.7	300.8	70- 80	489.5	13006	98.9,98.9
90	16.49	15.94	10.67	12.53	18.69	15.93	8.009	14.90	80- 90	135.8	13142	99.9,99.9
100	5.211	6.853	8.393	5.879	2.614	2.950	4.422	3.291	90-100	7.222	13149	100,100
110	0	0	0	0	0	0	0	0	100-110	0.2829	13149	100,100
120	0	0	0	0	0	0	0	0	110-120	0	13149	100,100
130	0	0	0	0	0	0	0	0	120-130	0	13149	100,100
140	0	0	0	0	0	0	0	0	130-140	0	13149	100,100
150	0	0	0	0	0	0	0	0	140-150	0	13149	100,100
160	0	0	0	0	0	0	0	0	150-160	0	13149	100,100
170	0	0	0	0	0	0	0	0	160-170	0	13149	100,100
180	0	0	0	0	0	0	0	0	170-180	0	13149	100,100
DEG	LUMINOUS INTENSITY:cd									UNIT:lm		

Conical surface Flux(90deg): 8843.1 lm

%lum = 67.3%
%lamp = 67.3%

Conical surface Flux(120deg): 11531 lm

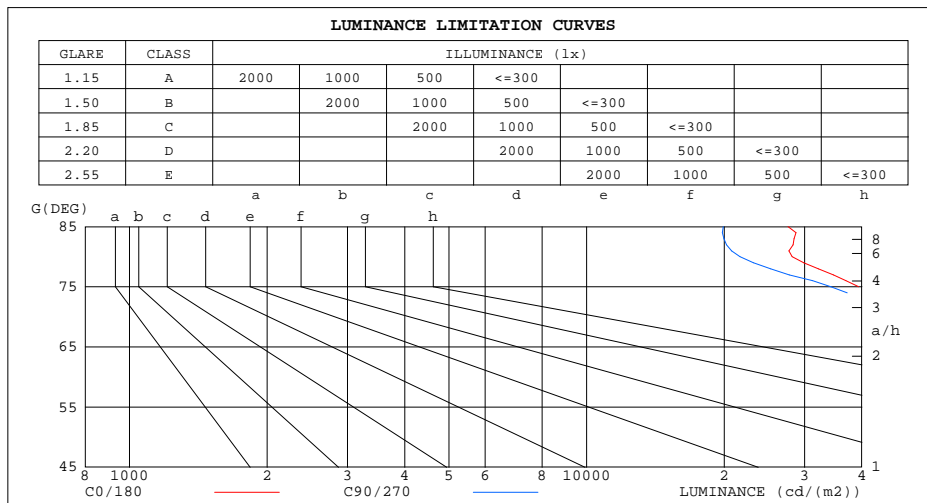
%lum = 87.7%
%lamp = 87.7%

C Range: 0 - 360DEG
C Interval: 15.0DEG
Test Speed: HIGH
Temperature:26DEG
Operators:NEIKO
Test Date:2016-11-05

γ Range: 0 - 180DEG
 γ Interval: 1.0DEG
Test System:EVERFINE GO-2000B_V1 SYSTEM V2.0.350
Humidity:60%
Test Distance:12.218m [K=1.0000]
Remarks: 80DEG

LUMINANCE LIMITATION CURVES

Test:U:220.0V I:0.5070A P:102.0W PF:0.9148 Lamp Flux:13149x1 lm		
NAME:	TYPE:	WEIGHT:
SPEC.:	DIM.:	SERIAL No.:BLD201601105P20
MFR.:	SUR.:0.08*0.22*2	Shielding Angle:



LUMINANCE cd/(m2)		
G(DEG)	C0/180	C90/270
85	27570	19911
80	28177	21655
75	39399	34238
70	48548	47070
65	55112	55259
60	63007	63913
55	72612	73894
50	84353	85967
45	98612	100039

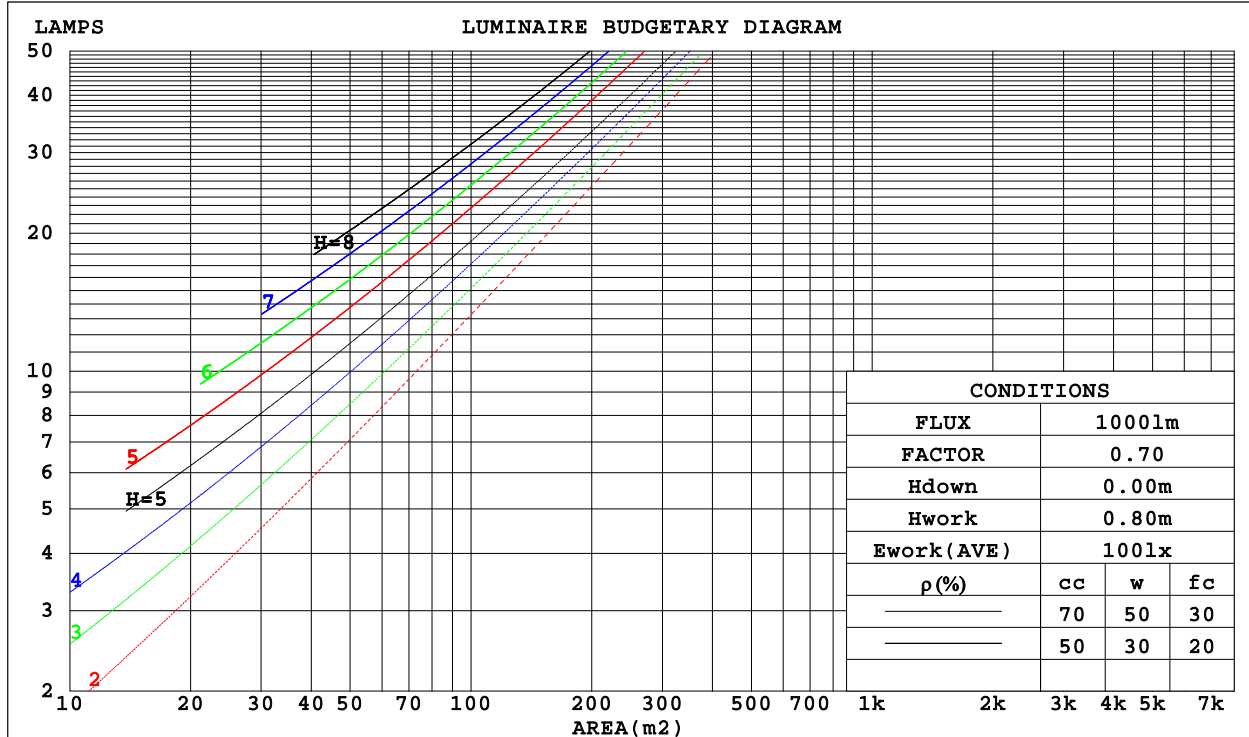
C Range: 0 - 360DEG
 C Interval: 15.0DEG
 Test Speed: HIGH
 Temperature: 26DEG
 Operators: NEIKO
 Test Date: 2016-11-05

γ Range: 0 - 180DEG
 γ Interval: 1.0DEG
 Test System: EVERFINE GO-2000B_V1 SYSTEM V2.0.350
 Humidity: 60%
 Test Distance: 12.218m [K=1.0000]
 Remarks: 80DEG

CU AND LUMINAIRE BUDGETARY ESTIMATE DIAGRAM

Test:U:220.0V I:0.5070A P:102.0W PF:0.9148 Lamp Flux:13149x1 lm		
NAME:	TYPE:	WEIGHT:
SPEC.:	DIM.:	SERIAL No.:BLD201601105P20
MFR.:	SUR.:0.08*0.22*2	Shielding Angle:

ρ_{cc}	80%			70%			50%			30%			10%			0
ρ_w	50%	30%	10%	50%	30%	10%	50%	30%	10%	50%	30%	10%	50%	30%	10%	0
ρ_{fc}	20%			20%			20%			20%			20%			0
RCR	RCR:Room Cavity Ratio Coefficients of Utilization(CU)															
0.0	1.19	1.19	1.19	1.16	1.16	1.16	1.11	1.11	1.11	1.06	1.06	1.06	1.02	1.02	1.02	.00
1.0	1.06	1.03	.99	1.04	1.01	.98	.90	.97	.95	.96	.94	.92	.92	.91	.89	.87
2.0	.95	.89	.84	.93	.87	.83	.89	.85	.81	.86	.82	.79	.83	.80	.77	.75
3.0	.85	.78	.72	.83	.77	.71	.80	.75	.70	.78	.73	.69	.75	.71	.68	.66
4.0	.76	.68	.62	.75	.68	.62	.73	.66	.61	.70	.65	.60	.68	.64	.60	.58
5.0	.69	.61	.55	.68	.60	.55	.66	.59	.54	.64	.58	.54	.62	.57	.53	.51
6.0	.63	.55	.49	.62	.54	.49	.60	.53	.48	.59	.53	.48	.57	.52	.48	.46
7.0	.58	.50	.44	.57	.49	.44	.55	.48	.43	.54	.48	.43	.53	.47	.43	.41
8.0	.53	.45	.40	.52	.45	.40	.51	.44	.39	.50	.44	.39	.49	.43	.39	.37
9.0	.49	.41	.36	.48	.41	.36	.47	.41	.36	.46	.40	.36	.45	.40	.36	.34
10.0	.45	.38	.33	.45	.38	.33	.44	.37	.33	.43	.37	.33	.42	.37	.33	.31



C Range: 0 - 360DEG
 C Interval: 15.0DEG
 Test Speed: HIGH
 Temperature:26DEG
 Operators:NEIKO
 Test Date:2016-11-05

γ Range: 0 - 180DEG
 γ Interval: 1.0DEG
 Test System:EVERFINE GO-2000B_V1 SYSTEM V2.0.350
 Humidity:60%
 Test Distance:12.218m [K=1.0000]
 Remarks: 80DEG

WEC AND CCEC

Test:U:220.0V I:0.5070A P:102.0W PF:0.9148 Lamp Flux:13149x1 lm		
NAME:	TYPE:	WEIGHT:
SPEC.:	DIM.:	SERIAL No.:BLD201601105P20
MFR.:	SUR.:0.08*0.22*2	Shielding Angle:

pcc	80%			70%			50%			30%			10%			0
pw	50%	30%	10%	50%	30%	10%	50%	30%	10%	50%	30%	10%	50%	30%	10%	0
pfc	20%			20%			20%			20%			20%			0
RCR	RCR:Room Cavity Ratio						Wall Exitance Coefficients(WEC)									
0.0																
1.0	.262	.149	.047	.256	.146	.046	.242	.139	.044	.230	.133	.043	.219	.127	.041	
2.0	.251	.137	.042	.245	.135	.042	.233	.130	.040	.223	.125	.039	.213	.121	.038	
3.0	.235	.125	.038	.230	.123	.037	.220	.119	.036	.211	.116	.035	.202	.112	.035	
4.0	.220	.114	.034	.216	.113	.033	.207	.110	.033	.199	.107	.032	.191	.104	.032	
5.0	.206	.105	.030	.202	.104	.030	.194	.101	.030	.187	.099	.029	.180	.096	.029	
6.0	.193	.097	.028	.189	.096	.028	.182	.093	.027	.176	.091	.027	.170	.089	.027	
7.0	.181	.090	.025	.178	.089	.025	.172	.087	.025	.166	.085	.025	.161	.083	.025	
8.0	.171	.083	.023	.168	.083	.023	.162	.081	.023	.157	.079	.023	.152	.078	.023	
9.0	.161	.078	.022	.158	.077	.022	.153	.076	.021	.149	.074	.021	.144	.073	.021	
10.0	.152	.073	.020	.150	.072	.020	.145	.071	.020	.141	.070	.020	.137	.069	.020	

pcc	80%			70%			50%			30%			10%			0
pw	50%	30%	10%	50%	30%	10%	50%	30%	10%	50%	30%	10%	50%	30%	10%	0
pfc	20%			20%			20%			20%			20%			0
RCR	RCR:Room Cavity Ratio						Ceiling Cavity Exitance Coefficients(CCEC)									
0.0	.191	.191	.191	.163	.163	.163	.111	.111	.111	.064	.064	.064	.020	.020	.020	
1.0	.177	.157	.139	.152	.135	.119	.104	.093	.082	.060	.054	.048	.019	.017	.016	
2.0	.167	.133	.103	.143	.114	.089	.098	.079	.062	.057	.046	.037	.018	.015	.012	
3.0	.158	.115	.080	.136	.099	.069	.093	.069	.048	.054	.040	.029	.017	.013	.009	
4.0	.150	.101	.063	.129	.087	.055	.089	.061	.039	.051	.036	.023	.016	.012	.008	
5.0	.143	.090	.051	.123	.078	.045	.084	.054	.031	.049	.032	.019	.016	.010	.006	
6.0	.136	.081	.043	.117	.071	.037	.080	.049	.026	.047	.029	.016	.015	.009	.005	
7.0	.129	.074	.036	.111	.065	.031	.077	.045	.022	.045	.027	.013	.014	.009	.004	
8.0	.123	.069	.031	.106	.059	.027	.073	.042	.019	.043	.025	.011	.014	.008	.004	
9.0	.117	.064	.027	.101	.055	.024	.070	.039	.017	.041	.023	.010	.013	.008	.003	
10.0	.112	.059	.024	.097	.052	.021	.067	.036	.015	.039	.021	.009	.013	.007	.003	

C Range: 0 - 360DEG
 C Interval: 15.0DEG
 Test Speed: HIGH
 Temperature:26DEG
 Operators:NEIKO
 Test Date:2016-11-05

γ Range: 0 - 180DEG
 γ Interval: 1.0DEG
 Test System:EVERFINE GO-2000B_V1 SYSTEM V2.0.350
 Humidity:60%
 Test Distance:12.218m [K=1.0000]
 Remarks: 80DEG

UGR(Unified Glare Rating) Table

Test:U:220.0V I:0.5070A P:102.0W PF:0.9148 Lamp Flux:13149x1 lm										
NAME:				TYPE:				WEIGHT:		
SPEC.:				DIM.:				SERIAL No.:BLD201601105P20		
MFR.:				SUR.:0.08*0.22*2				Shielding Angle:		
ceiling/cavity	0.7	0.7	0.5	0.5	0.3	0.7	0.7	0.5	0.5	0.3
walls	0.5	0.3	0.5	0.3	0.3	0.5	0.3	0.5	0.3	0.3
working plane	0.2	0.2	0.2	0.2	0.2	0.2	0.2	0.2	0.2	0.2
Room dimensions	Viewed crosswise					Viewed endwise				
x = 2H y = 2H	26.2	27.5	26.4	27.7	27.9	26.3	27.7	26.6	27.8	28.0
3H	27.0	28.3	27.3	28.5	28.7	27.1	28.4	27.4	28.6	28.8
4H	27.3	28.5	27.6	28.7	29.0	27.4	28.6	27.7	28.8	29.1
6H	27.5	28.6	27.8	28.9	29.1	27.5	28.6	27.8	28.9	29.1
8H	27.5	28.6	27.9	28.9	29.2	27.5	28.6	27.8	28.8	29.1
12H	27.6	28.6	27.9	28.9	29.2	27.5	28.5	27.8	28.8	29.1
4H 2H	26.5	27.6	26.8	27.9	28.1	26.6	27.8	26.9	28.0	28.3
3H	27.5	28.5	27.8	28.8	29.1	27.6	28.6	27.9	28.9	29.2
4H	27.9	28.9	28.3	29.2	29.5	28.0	28.9	28.4	29.3	29.6
6H	28.2	29.1	28.6	29.4	29.8	28.2	29.1	28.6	29.4	29.8
8H	28.3	29.1	28.7	29.5	29.8	28.3	29.1	28.7	29.4	29.8
12H	28.4	29.1	28.8	29.5	29.9	28.3	29.0	28.8	29.4	29.8
8H 4H	28.1	28.9	28.5	29.2	29.6	28.2	28.9	28.6	29.3	29.7
6H	28.5	29.2	29.0	29.6	30.0	28.6	29.2	29.0	29.6	30.0
8H	28.7	29.3	29.2	29.7	30.2	28.7	29.3	29.2	29.7	30.1
12H	28.9	29.4	29.4	29.8	30.3	28.8	29.3	29.3	29.7	30.2
12H 4H	28.1	28.8	28.5	29.2	29.6	28.2	28.9	28.6	29.2	29.6
6H	28.6	29.1	29.0	29.5	30.0	28.6	29.1	29.0	29.6	30.0
8H	28.8	29.3	29.3	29.7	30.2	28.8	29.3	29.3	29.7	30.2
Variations with the observer position at spacings:										
S = 1.0H	+ 0.4 / - 0.5					+ 0.4 / - 0.5				
1.5H	+ 0.2 / - 0.3					+ 0.2 / - 0.3				
2.0H	+ 0.7 / - 0.6					+ 0.7 / - 0.6				

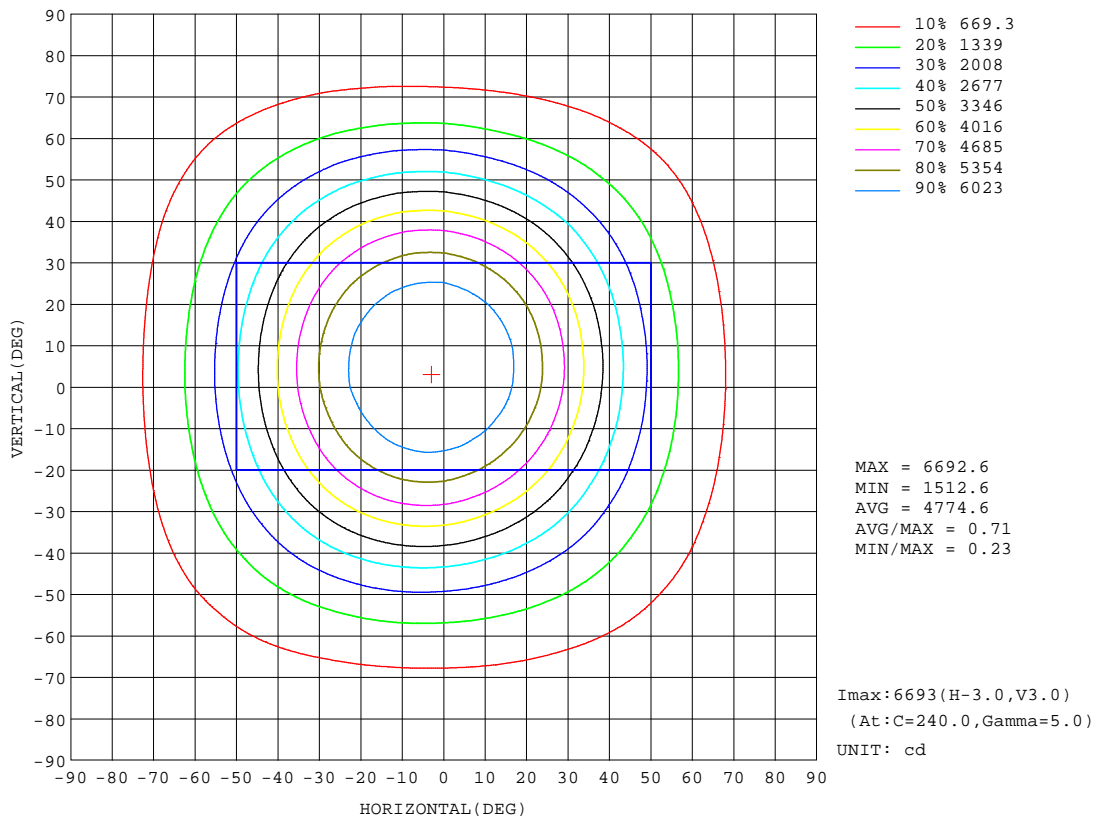
CIE Pub.117 Corrected 13149 lm Total Lamp Luminous Flux.(8log(F/F0) = 9.0)

C Range: 0 - 360DEG
C Interval: 15.0DEG
Test Speed: HIGH
Temperature:26DEG
Operators:NEIKO
Test Date:2016-11-05

γ Range: 0 - 180DEG
 γ Interval: 1.0DEG
Test System:EVERFINE GO-2000B_V1 SYSTEM V2.0.350
Humidity:60%
Test Distance:12.218m [K=1.0000]
Remarks: 80DEG

ISOCANDELA DIAGRAM

Test:U:220.0V I:0.5070A P:102.0W PF:0.9148 Lamp Flux:13149x1 lm		
NAME:	TYPE:	WEIGHT:
SPEC.:	DIM.:	SERIAL No.:BLD201601105P20
MFR.:	SUR.:0.08*0.22*2	Shielding Angle:



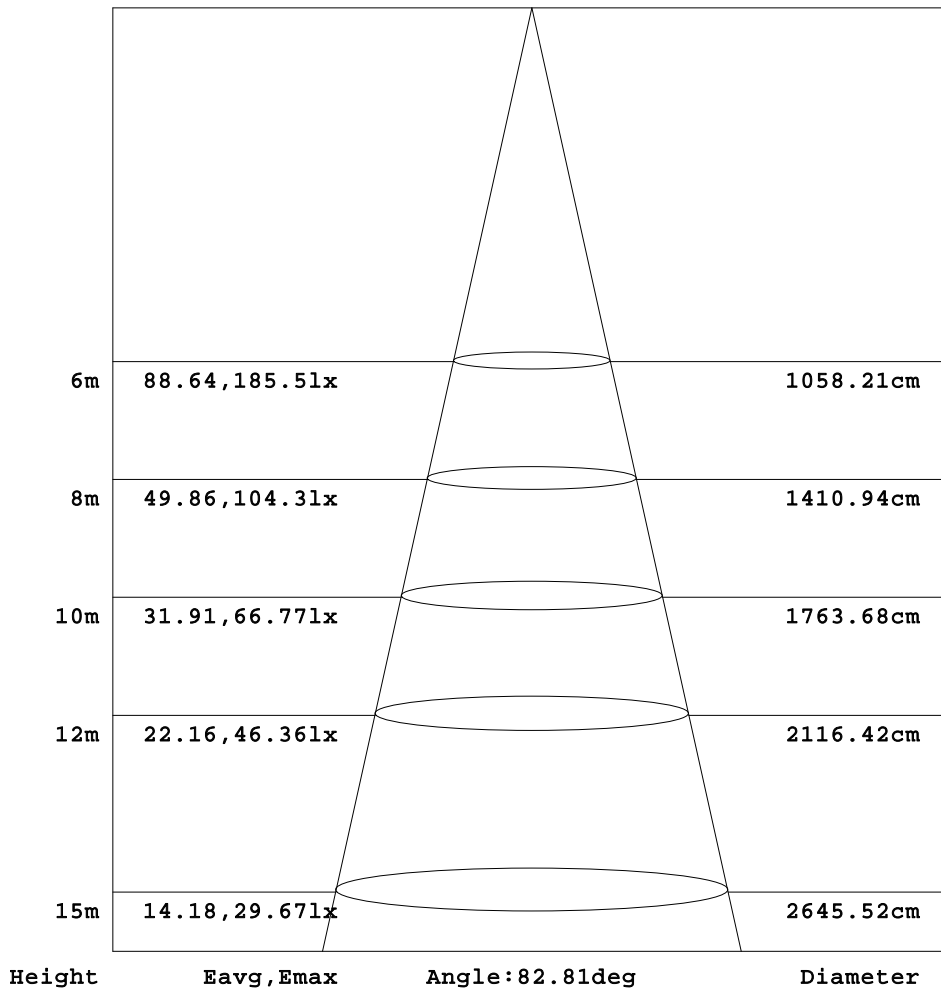
C Range: 0 - 360DEG
 C Interval: 15.0DEG
 Test Speed: HIGH
 Temperature:26DEG
 Operators:NEIKO
 Test Date:2016-11-05

γ Range: 0 - 180DEG
 γ Interval: 1.0DEG
 Test System:EVERFINE GO-2000B_V1 SYSTEM V2.0.350
 Humidity:60%
 Test Distance:12.218m [K=1.0000]
 Remarks: 80DEG

AAI Figure

Test:U:220.0V I:0.5070A P:102.0W PF:0.9148 Lamp Flux:13149x1 lm		
NAME:	TYPE:	WEIGHT:
SPEC.:	DIM.:	SERIAL No.:BLD201601105P20
MFR.:	SUR.:0.08*0.22*2	Shielding Angle:

Flux out:8128 lm



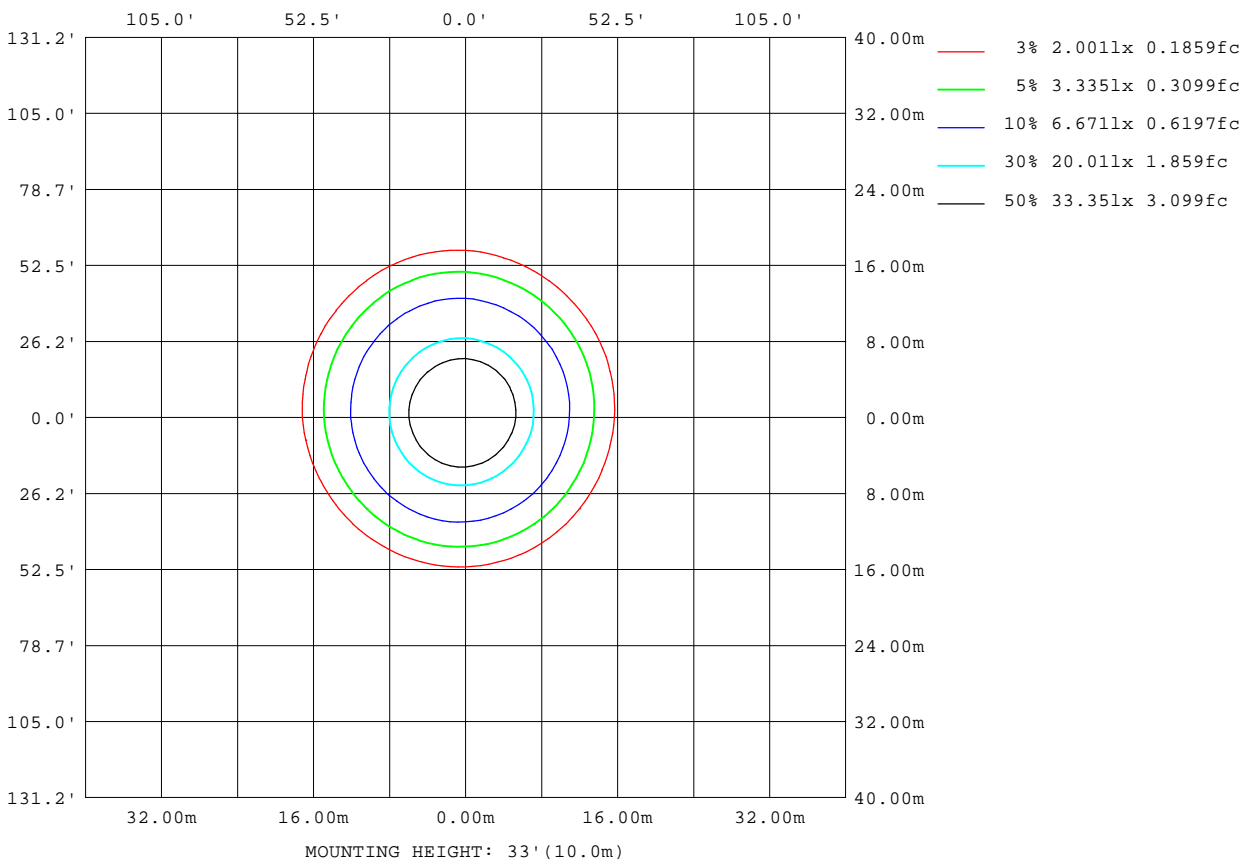
Note:The Curves indicate the illuminated area and the average illumination when the luminaire is at different distance.

C Range: 0 - 360DEG
 C Interval: 15.0DEG
 Test Speed: HIGH
 Temperature:26DEG
 Operators:NEIKO
 Test Date:2016-11-05

γ Range: 0 - 180DEG
 γ Interval: 1.0DEG
 Test System:EVERFINE GO-2000B_V1 SYSTEM V2.0.350
 Humidity:60%
 Test Distance:12.218m [K=1.0000]
 Remarks: 80DEG

ISOLUX DIAGRAM

Test:U:220.0V I:0.5070A P:102.0W PF:0.9148 Lamp Flux:13149x1 lm		
NAME:	TYPE:	WEIGHT:
SPEC.:	DIM.:	SERIAL No.:BLD201601105P20
MFR.:	SUR.:0.08*0.22*2	Shielding Angle:



C Range: 0 - 360DEG
 C Interval: 15.0DEG
 Test Speed: HIGH
 Temperature: 26DEG
 Operators: NEIKO
 Test Date: 2016-11-05

γ Range: 0 - 180DEG
 γ Interval: 1.0DEG
 Test System: EVERFINE GO-2000B_V1 SYSTEM V2.0.350
 Humidity: 60%
 Test Distance: 12.218m [K=1.0000]
 Remarks: 80DEG

LED Avg.L Report

Test:U:220.0V I:0.5070A P:102.0W PF:0.9148 Lamp Flux:13149x1 lm		
NAME:	TYPE:	WEIGHT:
SPEC.:	DIM.:	SERIAL No.:BLD201601105P20
MFR.:	SUR.:0.08*0.22*2	Shielding Angle:

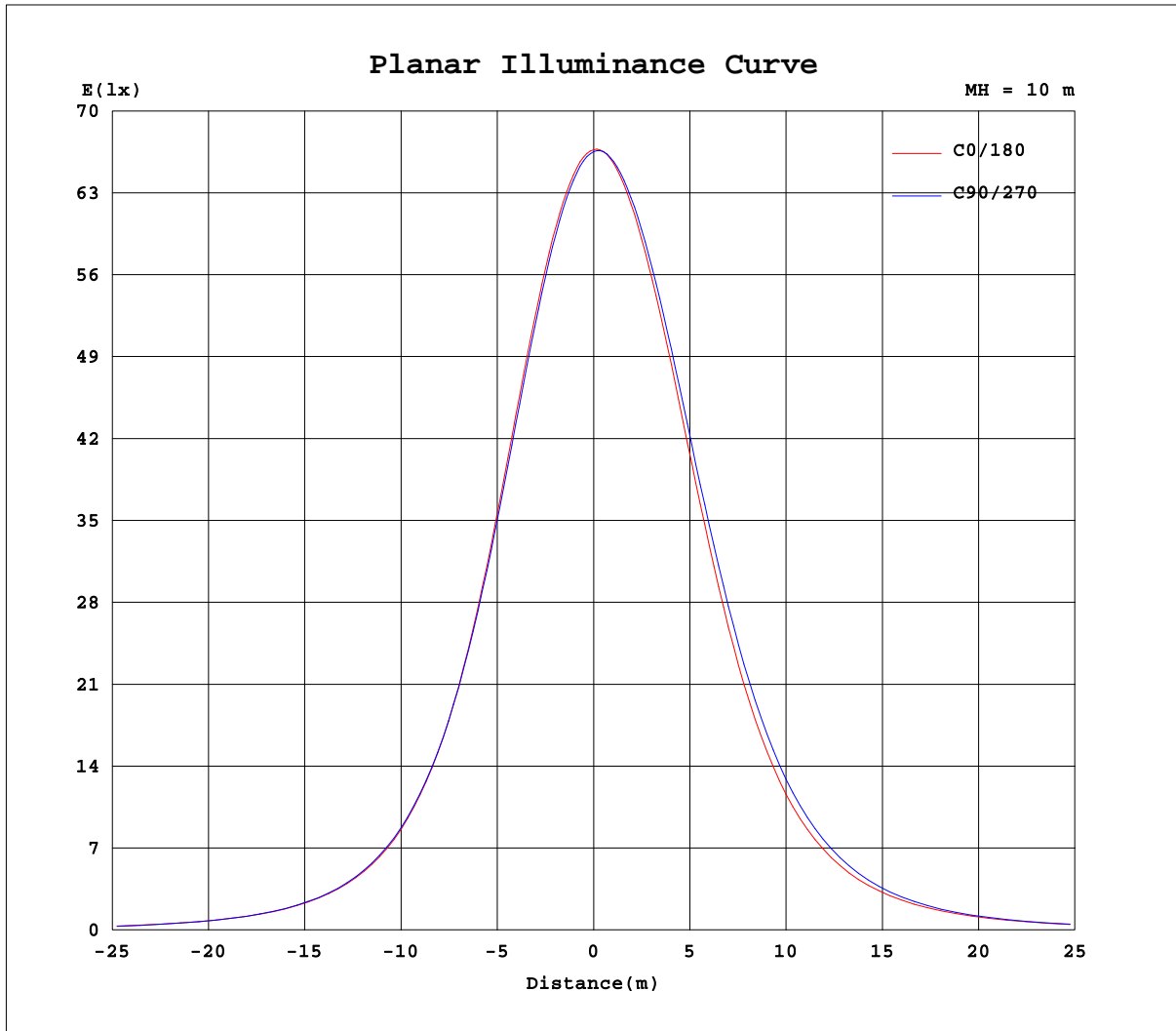
AvgL	cd/m2
L_0~180(65)av	66125
L_0~180(75)av	48768
L_0~180(85)av	28982
L_90~270(65)av	68738
L_90~270(75)av	44587
L_90~270(85)av	22297
L_45(65)av	65994
L_45(75)av	51793
L_45(85)av	34744

Standard: GB/T 29293-2012

C Range: 0 - 360DEG
 C Interval: 15.0DEG
 Test Speed: HIGH
 Temperature: 26DEG
 Operators: NEIKO
 Test Date: 2016-11-05

γ Range: 0 - 180DEG
 γ Interval: 1.0DEG
 Test System: EVERFINE GO-2000B_V1 SYSTEM V2.0.350
 Humidity: 60%
 Test Distance: 12.218m [K=1.0000]
 Remarks: 80DEG

Planar Illuminance Curve



C Range: 0 - 360DEG
 C Interval: 15.0DEG
 Test Speed: HIGH
 Temperature: 26DEG
 Operators: NEIKO
 Test Date: 2016-11-05

γ Range: 0 - 180DEG
 γ Interval: 1.0DEG
 Test System: EVERFINE GO-2000B_V1 SYSTEM V2.0.350
 Humidity: 60%
 Test Distance: 12.218m [K=1.0000]
 Remarks: 80DEG

LUMINOUS DISTRIBUTION INTENSITY DATA

Test:U:220.0V I:0.5070A P:102.0W PF:0.9148 Lamp Flux:13149x1 lm		
NAME:	TYPE:	WEIGHT:
SPEC.:	DIM.:	SERIAL No.:BLD201601105P20
MFR.:	SUR.:0.08*0.22*2	Shielding Angle:

Table--1

UNIT: cd

C(DEG) γ (DEG)	0	15	30	45	60	75	90	105	120	135	150	165	180	195	210	225	240	255	270
0	6657	6657	6657	6657	6657	6657	6657	6657	6657	6657	6657	6657	6657	6657	6657	6657	6657	6657	6657
5	6575	6557	6545	6540	6534	6543	6549	6564	6581	6603	6619	6639	6657	6665	6679	6684	6688	6687	6682
10	6401	6362	6329	6316	6310	6332	6353	6389	6425	6469	6503	6543	6575	6598	6624	6639	6648	6648	6639
15	6116	6050	5996	5977	5970	6010	6050	6114	6173	6242	6298	6366	6419	6458	6502	6526	6547	6545	6530
20	5706	5593	5530	5491	5504	5546	5629	5706	5807	5899	5995	6095	6178	6239	6304	6339	6366	6362	6337
25	5164	5027	4949	4908	4928	4987	5095	5198	5324	5443	5574	5693	5810	5916	6010	6056	6086	6076	6038
30	4507	4359	4274	4240	4267	4343	4465	4592	4733	4877	5031	5176	5326	5461	5567	5642	5664	5666	5599
35	3790	3644	3563	3543	3576	3657	3785	3920	4065	4216	4376	4537	4709	4864	4999	5091	5129	5125	5044
40	3084	2950	2883	2880	2919	2992	3109	3239	3377	3519	3668	3830	4004	4166	4317	4425	4478	4470	4375
45	2435	2330	2276	2288	2317	2385	2477	2596	2715	2841	2969	3117	3280	3435	3585	3696	3758	3748	3650
50	1894	1811	1773	1788	1813	1865	1935	2029	2118	2226	2330	2466	2607	2743	2872	2972	3032	3024	2933
55	1455	1391	1363	1377	1399	1436	1484	1550	1615	1702	1789	1906	2026	2127	2235	2305	2362	2348	2270
60	1100	1049	1027	1037	1057	1086	1119	1159	1202	1269	1338	1439	1540	1616	1690	1736	1775	1758	1694
65	813	769	750	758	772	795	818	838	868	919	969	1052	1143	1195	1237	1260	1278	1260	1216
70	580	548	532	544	548	563	564	584	605	645	679	744	818	852	870	876	881	863	826
75	356	367	372	384	385	372	310	366	416	441	464	500	527	574	588	587	591	553	498
80	171	220	233	234	254	209	132	182	273	285	303	299	249	326	373	378	385	303	222
85	83.9	112	108	90.4	103	101	60.8	86.5	113	95.8	133	140	92.9	145	177	136	199	139	75.3
90	16.5	19.1	18.0	15.9	13.7	12.7	10.7	12.2	12.6	12.5	16.6	20.8	18.7	23.8	23.7	15.9	16.6	13.1	8.01
95	4.01	4.38	5.63	7.67	9.87	11.0	10.9	10.4	9.29	7.00	4.73	3.38	2.09	1.99	3.17	4.85	7.11	7.36	6.75
100	5.21	5.48	5.81	6.85	8.89	9.60	8.39	9.25	8.07	5.88	4.65	4.28	2.61	2.57	2.61	2.95	4.36	5.00	4.42
105	0.00	0.00	0.00	0.00	0.00	0.00	0.00	0.00	0.00	0.00	0.00	0.00	0.00	0.00	0.00	0.00	0.00	0.00	0.00
110	0.00	0.00	0.00	0.00	0.00	0.00	0.00	0.00	0.00	0.00	0.00	0.00	0.00	0.00	0.00	0.00	0.00	0.00	0.00
115	0.00	0.00	0.00	0.00	0.00	0.00	0.00	0.00	0.00	0.00	0.00	0.00	0.00	0.00	0.00	0.00	0.00	0.00	0.00
120	0.00	0.00	0.00	0.00	0.00	0.00	0.00	0.00	0.00	0.00	0.00	0.00	0.00	0.00	0.00	0.00	0.00	0.00	0.00
125	0.00	0.00	0.00	0.00	0.00	0.00	0.00	0.00	0.00	0.00	0.00	0.00	0.00	0.00	0.00	0.00	0.00	0.00	0.00
130	0.00	0.00	0.00	0.00	0.00	0.00	0.00	0.00	0.00	0.00	0.00	0.00	0.00	0.00	0.00	0.00	0.00	0.00	0.00
135	0.00	0.00	0.00	0.00	0.00	0.00	0.00	0.00	0.00	0.00	0.00	0.00	0.00	0.00	0.00	0.00	0.00	0.00	0.00
140	0.00	0.00	0.00	0.00	0.00	0.00	0.00	0.00	0.00	0.00	0.00	0.00	0.00	0.00	0.00	0.00	0.00	0.00	0.00
145	0.00	0.00	0.00	0.00	0.00	0.00	0.00	0.00	0.00	0.00	0.00	0.00	0.00	0.00	0.00	0.00	0.00	0.00	0.00
150	0.00	0.00	0.00	0.00	0.00	0.00	0.00	0.00	0.00	0.00	0.00	0.00	0.00	0.00	0.00	0.00	0.00	0.00	0.00
155	0.00	0.00	0.00	0.00	0.00	0.00	0.00	0.00	0.00	0.00	0.00	0.00	0.00	0.00	0.00	0.00	0.00	0.00	0.00
160	0.00	0.00	0.00	0.00	0.00	0.00	0.00	0.00	0.00	0.00	0.00	0.00	0.00	0.00	0.00	0.00	0.00	0.00	0.00
165	0.00	0.00	0.00	0.00	0.00	0.00	0.00	0.00	0.00	0.00	0.00	0.00	0.00	0.00	0.00	0.00	0.00	0.00	0.00
170	0.00	0.00	0.00	0.00	0.00	0.00	0.00	0.00	0.00	0.00	0.00	0.00	0.00	0.00	0.00	0.00	0.00	0.00	0.00
175	0.00	0.00	0.00	0.00	0.00	0.00	0.00	0.00	0.00	0.00	0.00	0.00	0.00	0.00	0.00	0.00	0.00	0.00	0.00
180	0.00	0.00	0.00	0.00	0.00	0.00	0.00	0.00	0.00	0.00	0.00	0.00	0.00	0.00	0.00	0.00	0.00	0.00	0.00

C Range: 0 - 360DEG
 C Interval: 15.0DEG
 Test Speed: HIGH
 Temperature:26DEG
 Operators:NEIKO
 Test Date:2016-11-05

γ Range: 0 - 180DEG
 γ Interval: 1.0DEG
 Test System:EVERFINE GO-2000B_V1 SYSTEM V2.0.350
 Humidity:60%
 Test Distance:12.218m [K=1.0000]
 Remarks: 80DEG

LUMINOUS DISTRIBUTION INTENSITY DATA

Test:U:220.0V I:0.5070A P:102.0W PF:0.9148 Lamp Flux:13149x1 lm		
NAME:	TYPE:	WEIGHT:
SPEC.:	DIM.:	SERIAL No.:BLD201601105P20
MFR.:	SUR.:0.08*0.22*2	Shielding Angle:

Table--2

UNIT: cd

C(DEG) γ (DEG)	285	300	315	330	345														
0	6657	6657	6657	6657	6657														
5	6670	6658	6641	6618	6596														
10	6612	6585	6544	6500	6450														
15	6486	6435	6365	6290	6201														
20	6265	6189	6082	5971	5833														
25	5935	5810	5672	5498	5328														
30	5478	5314	5127	4912	4700														
35	4889	4691	4466	4226	3993														
40	4196	3983	3743	3501	3276														
45	3469	3256	3024	2807	2606														
50	2757	2565	2363	2192	2025														
55	2110	1961	1803	1677	1553														
60	1566	1454	1341	1257	1171														
65	1119	1040	968	916	861														
70	769	721	677	648	613														
75	505	489	464	447	400														
80	302	328	301	286	210														
85	151	157	101	141	102														
90	12.0	13.7	14.9	19.0	18.9														
95	7.28	5.97	4.28	3.16	2.50														
100	4.98	4.30	3.29	3.22	3.27														
105	0.00	0.00	0.00	0.00	0.00														
110	0.00	0.00	0.00	0.00	0.00														
115	0.00	0.00	0.00	0.00	0.00														
120	0.00	0.00	0.00	0.00	0.00														
125	0.00	0.00	0.00	0.00	0.00														
130	0.00	0.00	0.00	0.00	0.00														
135	0.00	0.00	0.00	0.00	0.00														
140	0.00	0.00	0.00	0.00	0.00														
145	0.00	0.00	0.00	0.00	0.00														
150	0.00	0.00	0.00	0.00	0.00														
155	0.00	0.00	0.00	0.00	0.00														
160	0.00	0.00	0.00	0.00	0.00														
165	0.00	0.00	0.00	0.00	0.00														
170	0.00	0.00	0.00	0.00	0.00														
175	0.00	0.00	0.00	0.00	0.00														
180	0.00	0.00	0.00	0.00	0.00														

C Range: 0 - 360DEG
 C Interval: 15.0DEG
 Test Speed: HIGH
 Temperature:26DEG
 Operators:NEIKO
 Test Date:2016-11-05

γ Range: 0 - 180DEG
 γ Interval: 1.0DEG
 Test System:EVERFINE GO-2000B_V1 SYSTEM V2.0.350
 Humidity:60%
 Test Distance:12.218m [K=1.0000]
 Remarks: 80DEG