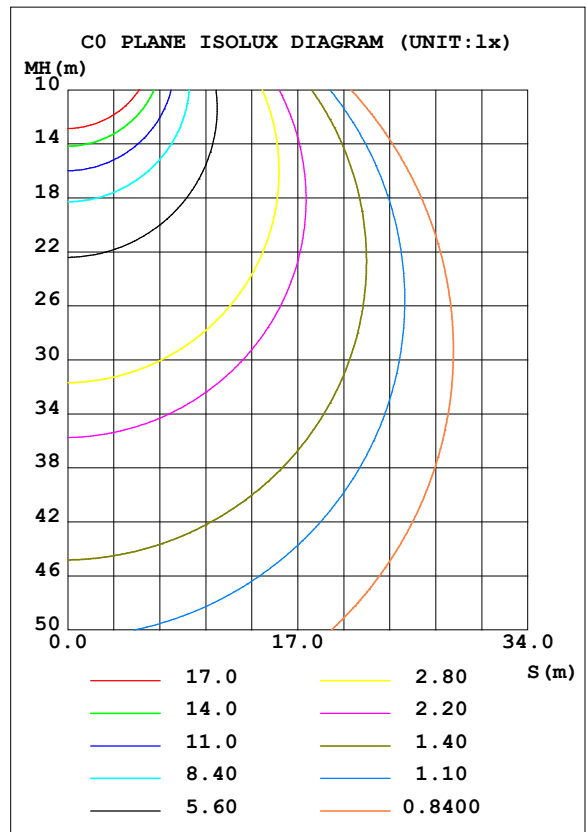
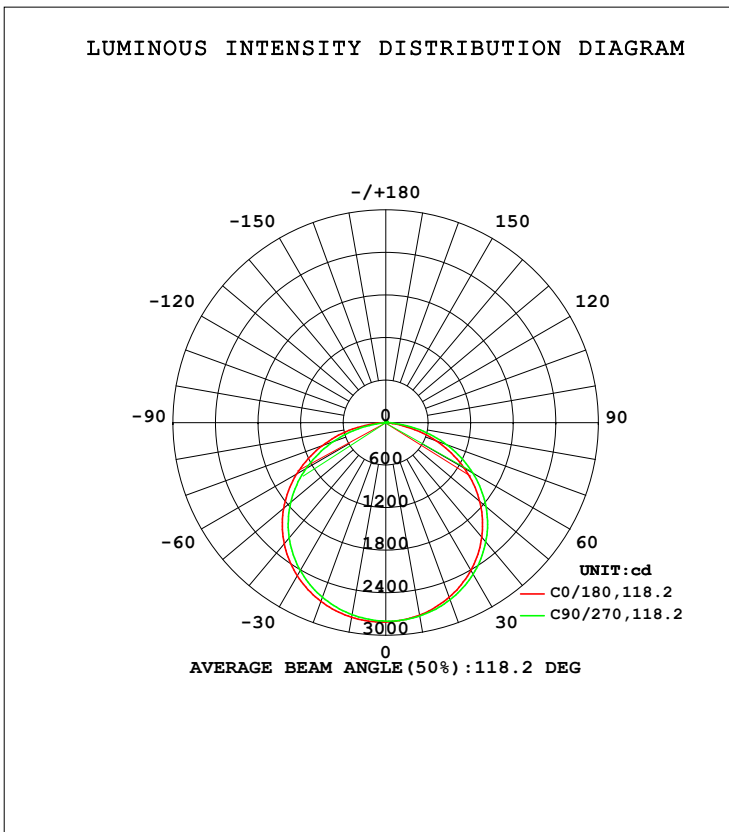


LUMINAIRE PHOTOMETRIC TEST REPORT

Test:U:220.0V I:0.2760A P:59.00W PF:0.9740 Freq:50.00Hz Lamp Flux:8511.55x1 lm		
NAME:	TYPE:	WEIGHT:
SPEC.:	DIM.:	SERIAL No.:
MFR.:	SUR.:0.1275*0.1275*3.14	Shielding Angle:120

DATA OF LAMP		PHOTOMETRIC DATA Eff: 144.26 lm/W			
MODEL	HBL-60-120	I _{max} (cd)	2813	S/MH (C0/180)	1.32
NOMINAL POWER (W)	60	LOR (%)	100.0	S/MH (C90/270)	1.28
RATED VOLTAGE (V)	220	TOTAL FLUX (lm)	8511.6	η UP, DN (C0-180)	0.6, 49.9
NOMINAL FLUX (lm)	8511.55	CIE CLASS	DIRECT	η UP, DN (C180-360)	0.4, 49.1
LAMPS INSIDE	1	η up (%)	1.0	CIBSE SHR NOM	1.25
TEST VOLTAGE (V)	220	η down (%)	99.0	CIBSE SHR MAX	1.35



C Range: 0 - 360DEG
 C Interval: 45.0DEG
 Test Speed: HIGH
 Temperature: 25.3DEG
 Operators: 007
 Test Date: 2016-08-12

γ Range: 0 - 180DEG
 γ Interval: 1.0DEG
 Test System: EVERFINE GO-2000B_V1 SYSTEM V2.0.362
 Humidity: 65.0%
 Test Distance: 5.560m [K=1.0000]
 Remarks: HBL-60W-120

ZONAL FLUX DIAGRAM

ZONAL FLUX DIAGRAM:

γ	C0	C45	C90	C135	C180	C225	C270	C315	γ	Φ zone	Φ total	%lum, lamp
10	2756	2762	2768	2770	2787	2767	2749	2736	0- 10	265.6	265.6	3.12,3.12
20	2619	2639	2657	2666	2681	2649	2619	2599	10- 20	765.8	1031	12.1,12.1
30	2403	2437	2466	2483	2495	2450	2410	2384	20- 30	1176	2208	25.9,25.9
40	2107	2153	2196	2220	2229	2172	2120	2086	30- 40	1446	3654	42.9,42.9
50	1730	1790	1846	1877	1883	1813	1751	1710	40- 50	1535	5188	61,61
60	1274	1343	1415	1455	1456	1374	1299	1256	50- 60	1419	6608	77.6,77.6
70	759.4	838.3	916.1	957.1	953.7	869.6	788.5	743.1	60- 70	1098	7706	90.5,90.5
80	202.3	286.3	361.9	414.6	407.0	316.3	235.9	193.6	70- 80	615.1	8321	97.8,97.8
90	5.919	5.453	5.346	5.226	3.147	2.914	3.069	3.273	80- 90	105.6	8426	99,99
100	9.321	8.717	8.179	7.805	4.705	5.126	5.499	5.708	90-100	5.955	8432	99.1,99.1
110	12.90	12.21	11.69	11.32	7.377	7.840	8.419	8.514	100-110	8.914	8441	99.2,99.2
120	16.46	15.82	15.48	15.06	10.43	10.87	11.63	11.63	110-120	11.60	8453	99.3,99.3
130	19.49	19.16	18.84	18.46	13.49	13.82	14.57	14.66	120-130	13.46	8466	99.5,99.5
140	21.53	21.36	21.21	20.75	16.03	16.09	16.81	16.78	130-140	13.72	8480	99.6,99.6
150	22.73	22.93	22.67	22.39	18.42	18.71	19.29	19.17	140-150	12.45	8492	99.8,99.8
160	24.63	24.69	24.43	24.20	20.35	20.54	21.13	21.06	150-160	10.05	8502	99.9,99.9
170	25.76	25.43	25.30	25.25	23.81	23.88	24.55	24.24	160-170	6.677	8509	100,100
180	25.89	25.79	25.94	25.71	26.08	25.73	25.81	25.81	170-180	2.408	8512	100,100
DEG	LUMINOUS INTENSITY:cd									UNIT:lm		

Conical surface Flux(90deg): 4422.5 lm

%lum = 52.0%

%lamp = 52.0%

Conical surface Flux(120deg): 6607.5 lm

%lum = 77.6%

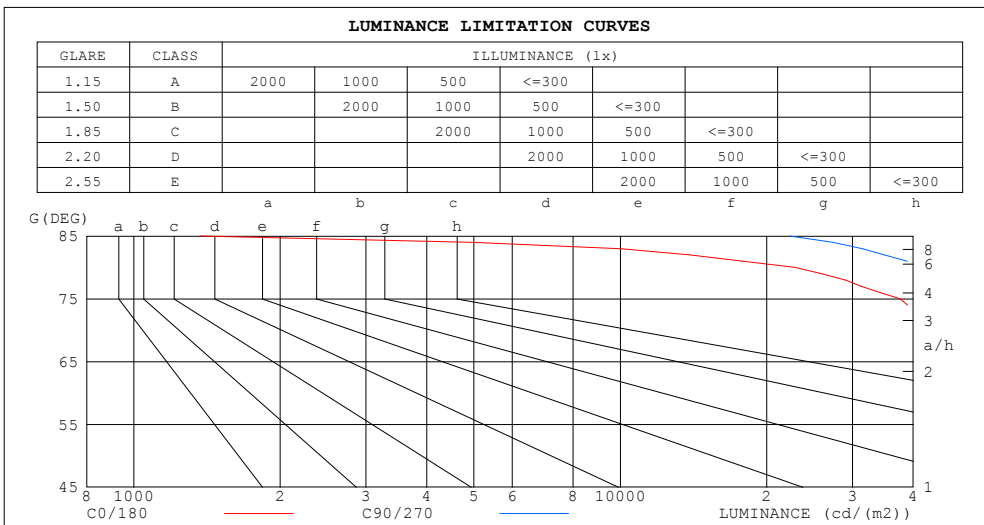
%lamp = 77.6%

C Range: 0 - 360DEG
 C Interval: 45.0DEG
 Test Speed: HIGH
 Temperature:25.3DEG
 Operators:007
 Test Date:2016-08-12

γ Range: 0 - 180DEG
 γ Interval: 1.0DEG
 Test System:EVERFINE GO-2000B_V1 SYSTEM V2.0.362
 Humidity:65.0%
 Test Distance:5.560m [K=1.0000]
 Remarks: HBL-60W-120

LUMINANCE LIMITATION CURVES

Test:U:220.0V I:0.2760A P:59.00W PF:0.9740 Freq:50.00Hz Lamp Flux:8511.55x1 lm		
NAME:	TYPE:	WEIGHT:
SPEC.:	DIM.:	SERIAL No.:
MFR.:	SUR.:0.1275*0.1275*3.14	Shielding Angle:120



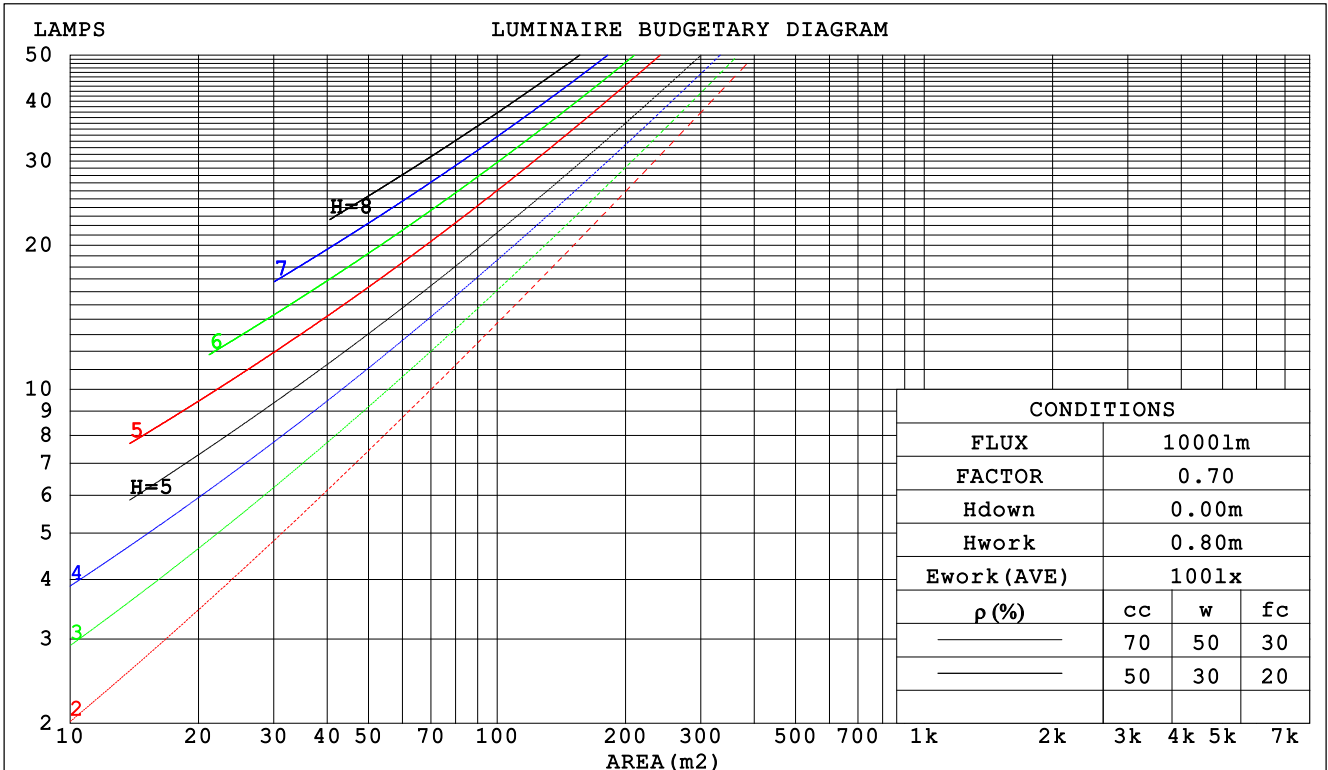
C Range: 0 - 360DEG
 C Interval: 45.0DEG
 Test Speed: HIGH
 Temperature:25.3DEG
 Operators:007
 Test Date:2016-08-12

γ Range: 0 - 180DEG
 γ Interval: 1.0DEG
 Test System:EVERFINE GO-2000B_V1 SYSTEM V2.0.362
 Humidity:65.0%
 Test Distance:5.560m [K=1.0000]
 Remarks: HBL-60W-120

CU AND LUMINAIRE BUDGETARY ESTIMATE DIAGRAM

Test:U:220.0V I:0.2760A P:59.00W PF:0.9740 Freq:50.00Hz Lamp Flux:8511.55x1 lm		
NAME:	TYPE:	WEIGHT:
SPEC.:	DIM.:	SERIAL No.:
MFR.:	SUR.:0.1275*0.1275*3.14	Shielding Angle:120

ρ_{cc}	80%			70%			50%			30%			10%			0
ρ_w	50%	30%	10%	50%	30%	10%	50%	30%	10%	50%	30%	10%	50%	30%	10%	0
ρ_{fc}	20%			20%			20%			20%			20%			0
RCR	RCR:Room Cavity Ratio						Coefficients of Utilization(CU)									
0.0	1.19	1.19	1.19	1.16	1.16	1.16	1.11	1.11	1.11	1.06	1.06	1.06	1.01	1.01	1.01	.99
1.0	1.04	.99	.96	1.01	.98	.94	.97	.94	.91	.93	.90	.88	.89	.87	.85	.83
2.0	.90	.83	.77	.88	.82	.76	.84	.79	.75	.81	.77	.73	.78	.74	.71	.69
3.0	.79	.71	.64	.77	.70	.63	.74	.68	.62	.71	.66	.61	.69	.64	.60	.57
4.0	.70	.61	.54	.68	.60	.54	.66	.58	.53	.63	.57	.52	.61	.56	.51	.49
5.0	.62	.53	.46	.61	.52	.46	.59	.51	.45	.57	.50	.45	.55	.49	.44	.42
6.0	.56	.47	.40	.55	.46	.40	.53	.45	.40	.51	.44	.39	.49	.43	.39	.37
7.0	.50	.42	.35	.50	.41	.35	.48	.40	.35	.46	.40	.35	.45	.39	.34	.32
8.0	.46	.37	.31	.45	.37	.31	.44	.36	.31	.42	.36	.31	.41	.35	.31	.29
9.0	.42	.34	.28	.42	.34	.28	.40	.33	.28	.39	.32	.28	.38	.32	.28	.26
10.0	.39	.31	.26	.38	.31	.25	.37	.30	.25	.36	.30	.25	.35	.29	.25	.23



C Range: 0 - 360DEG
 C Interval: 45.0DEG
 Test Speed: HIGH
 Temperature:25.3DEG
 Operators:007
 Test Date:2016-08-12

γ Range: 0 - 180DEG
 γ Interval: 1.0DEG
 Test System:EVERFINE GO-2000B_V1 SYSTEM V2.0.362
 Humidity:65.0%
 Test Distance:5.560m [K=1.0000]
 Remarks: HBL-60W-120

WEC AND CCEC

Test:U:220.0V I:0.2760A P:59.00W PF:0.9740 Freq:50.00Hz Lamp Flux:8511.55x1 lm		
NAME:	TYPE:	WEIGHT:
SPEC.:	DIM.:	SERIAL No.:
MFR.:	SUR.:0.1275*0.1275*3.14	Shielding Angle:120

ρcc	80%			70%			50%			30%			10%			0
ρw	50%	30%	10%	50%	30%	10%	50%	30%	10%	50%	30%	10%	50%	30%	10%	0
ρfc	20%			20%			20%			20%			20%			0
RCR	RCR:Room Cavity Ratio						Wall Exitance Coefficients (WEC)									
0.0																
1.0	.307	.175	.055	.300	.171	.054	.286	.164	.052	.273	.158	.051	.262	.152	.049	
2.0	.292	.160	.049	.286	.157	.048	.273	.152	.047	.262	.147	.046	.252	.142	.045	
3.0	.271	.144	.043	.266	.142	.043	.255	.138	.042	.245	.134	.041	.235	.130	.040	
4.0	.251	.130	.038	.246	.129	.038	.236	.125	.037	.227	.122	.037	.219	.119	.036	
5.0	.232	.118	.034	.227	.117	.034	.219	.114	.034	.211	.111	.033	.203	.109	.033	
6.0	.215	.108	.031	.211	.107	.031	.203	.104	.030	.196	.102	.030	.189	.100	.030	
7.0	.200	.099	.028	.196	.098	.028	.190	.096	.028	.183	.094	.027	.177	.092	.027	
8.0	.187	.091	.026	.184	.090	.026	.177	.089	.025	.172	.087	.025	.166	.085	.025	
9.0	.175	.085	.024	.172	.084	.024	.167	.082	.023	.161	.081	.023	.156	.079	.023	
10.0	.164	.079	.022	.162	.078	.022	.157	.077	.022	.152	.076	.021	.148	.074	.021	

ρcc	80%			70%			50%			30%			10%			0
ρw	50%	30%	10%	50%	30%	10%	50%	30%	10%	50%	30%	10%	50%	30%	10%	0
ρfc	20%			20%			20%			20%			20%			0
RCR	RCR:Room Cavity Ratio						Ceiling Cavity Exitance Coefficients (CCEC)									
0.0	.198	.198	.198	.169	.169	.169	.116	.116	.116	.066	.066	.066	.021	.021	.021	
1.0	.188	.164	.142	.161	.141	.122	.110	.097	.085	.063	.056	.049	.020	.018	.016	
2.0	.180	.140	.106	.154	.120	.091	.106	.083	.064	.061	.048	.037	.020	.016	.012	
3.0	.173	.122	.082	.148	.105	.071	.102	.073	.050	.059	.043	.029	.019	.014	.010	
4.0	.165	.109	.066	.142	.094	.057	.097	.066	.040	.056	.038	.024	.018	.012	.008	
5.0	.158	.098	.055	.135	.085	.048	.093	.060	.034	.054	.035	.020	.017	.011	.007	
6.0	.151	.090	.047	.129	.078	.041	.089	.055	.029	.052	.032	.017	.017	.011	.006	
7.0	.144	.083	.041	.124	.072	.036	.085	.051	.025	.050	.030	.015	.016	.010	.005	
8.0	.137	.078	.036	.118	.067	.032	.082	.047	.023	.048	.028	.013	.015	.009	.004	
9.0	.131	.073	.033	.113	.063	.029	.078	.044	.020	.046	.026	.012	.015	.009	.004	
10.0	.126	.068	.030	.108	.059	.026	.075	.042	.019	.044	.025	.011	.014	.008	.004	

C Range: 0 - 360DEG
 C Interval: 45.0DEG
 Test Speed: HIGH
 Temperature:25.3DEG
 Operators:007
 Test Date:2016-08-12

γ Range: 0 - 180DEG
 γ Interval: 1.0DEG
 Test System:EVERFINE GO-2000B_V1 SYSTEM V2.0.362
 Humidity:65.0%
 Test Distance:5.560m [K=1.0000]
 Remarks: HBL-60W-120

UGR(Unified Glare Rating) Table

Test:U:220.0V I:0.2760A P:59.00W PF:0.9740 Freq:50.00Hz Lamp Flux:8511.55x1 lm										
NAME:			TYPE:			WEIGHT:				
SPEC.:			DIM.:			SERIAL No.:				
MFR.:			SUR.:0.1275*0.1275*3.14			Shielding Angle:120				
ceiling/cavity	0.7	0.7	0.5	0.5	0.3	0.7	0.7	0.5	0.5	0.3
walls	0.5	0.3	0.5	0.3	0.3	0.5	0.3	0.5	0.3	0.3
working plane	0.2	0.2	0.2	0.2	0.2	0.2	0.2	0.2	0.2	0.2
Room dimensions	Viewed crosswise					Viewed endwise				
x = 2H y = 2H	19.1	20.7	19.4	20.9	21.1	19.5	21.0	19.8	21.2	21.5
3H	20.6	22.0	20.9	22.2	22.5	21.2	22.6	21.5	22.8	23.1
4H	21.1	22.4	21.4	22.7	23.0	21.8	23.2	22.1	23.4	23.7
6H	21.3	22.5	21.6	22.8	23.1	22.3	23.5	22.6	23.8	24.1
8H	21.3	22.5	21.6	22.8	23.1	22.3	23.6	22.7	23.9	24.2
12H	21.2	22.4	21.6	22.7	23.0	22.4	23.5	22.7	23.8	24.2
4H 2H	19.8	21.1	20.1	21.4	21.7	20.1	21.4	20.4	21.7	22.0
3H	21.4	22.6	21.8	22.9	23.2	21.9	23.1	22.3	23.4	23.7
4H	22.0	23.1	22.4	23.4	23.8	22.7	23.8	23.1	24.1	24.4
6H	22.3	23.3	22.7	23.6	24.0	23.2	24.2	23.6	24.5	24.9
8H	22.3	23.2	22.8	23.6	24.0	23.4	24.2	23.8	24.6	25.0
12H	22.3	23.1	22.7	23.5	23.9	23.4	24.2	23.8	24.6	25.0
8H 4H	22.3	23.2	22.7	23.6	24.0	22.9	23.8	23.3	24.2	24.6
6H	22.7	23.4	23.1	23.8	24.3	23.5	24.3	24.0	24.7	25.1
8H	22.7	23.4	23.2	23.8	24.3	23.7	24.4	24.2	24.8	25.3
12H	22.7	23.3	23.2	23.7	24.2	23.8	24.3	24.3	24.8	25.3
12H 4H	22.3	23.1	22.8	23.5	23.9	22.9	23.7	23.3	24.1	24.5
6H	22.7	23.4	23.2	23.8	24.3	23.5	24.2	24.0	24.6	25.1
8H	22.8	23.3	23.3	23.8	24.3	23.7	24.3	24.2	24.8	25.3
Variations with the observer position at spacings:										
S = 1.0H	+ 0.2 / - 0.2					+ 0.1 / - 0.2				
1.5H	+ 0.2 / - 0.4					+ 0.2 / - 0.3				
2.0H	+ 0.2 / - 0.4					+ 0.2 / - 0.3				

CIE Pub.117, 8512 lm Total Lamp Luminous Flux Correct (8log(F/F0) = 7.4)

C Range: 0 - 360DEG
 C Interval: 45.0DEG
 Test Speed: HIGH
 Temperature:25.3DEG
 Operators:007
 Test Date:2016-08-12

γ Range: 0 - 180DEG
 γ Interval: 1.0DEG
 Test System:EVERFINE GO-2000B_V1 SYSTEM V2.0.362
 Humidity:65.0%
 Test Distance:5.560m [K=1.0000]
 Remarks: HBL-60W-120

UTILIZATION FACTORS TABLE

Test:U:220.0V I:0.2760A P:59.00W PF:0.9740 Freq:50.00Hz Lamp Flux:8511.55x1 lm		
NAME:	TYPE:	WEIGHT:
SPEC.:	DIM.:	SERIAL No.:
MFR.:	SUR.:0.1275*0.1275*3.14	Shielding Angle:120

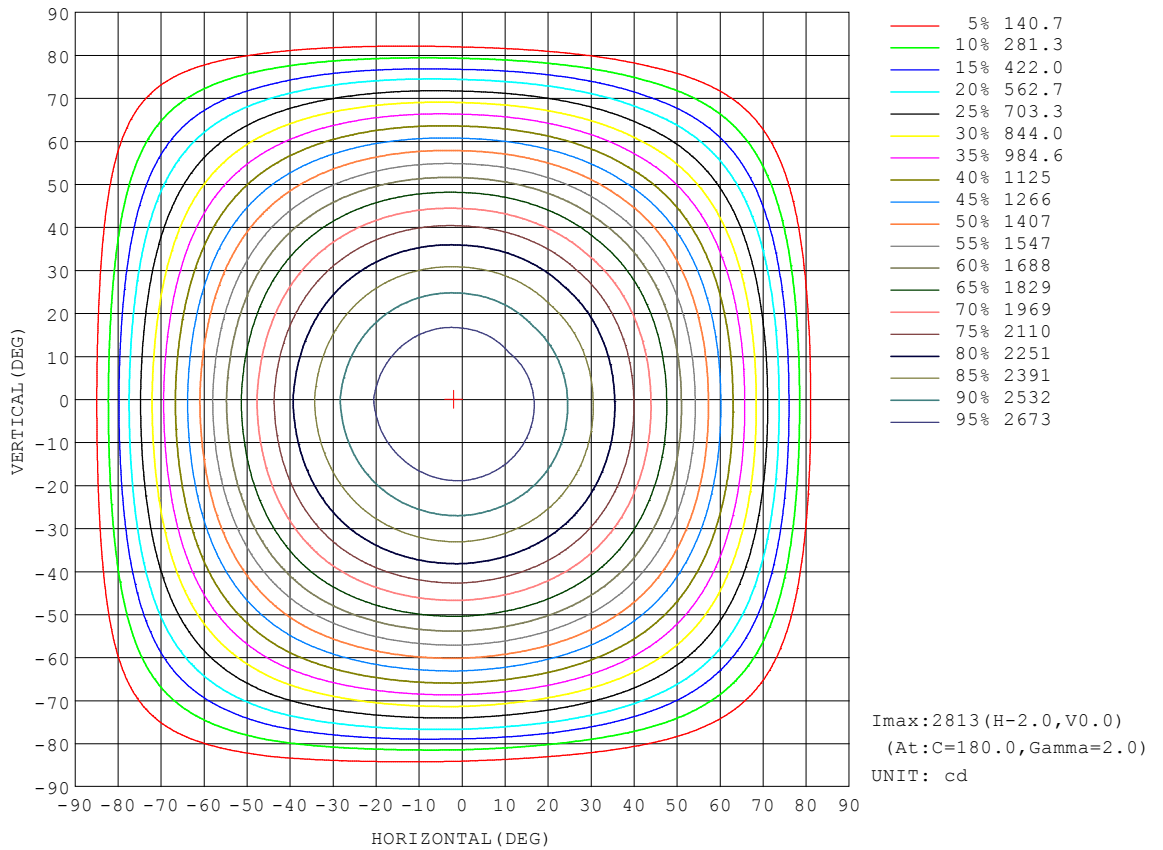
REFLECTANCE										
Ceiling	0.8	0.8	0.8	0.7	0.7	0.7	0.5	0.5	0.5	0
Walls	0.7	0.5	0.3	0.7	0.5	0.3	0.7	0.5	0.3	0
Working plane	0.2	0.2	0.2	0.2	0.2	0.2	0.2	0.2	0.2	0
ROOM INDEX	UTILIZATION FACTORS (PERCENT) $k(RI) \times RCR = 5$									
k = 0.60	56	45	38	56	44	38	54	44	37	31
0.80	67	55	47	66	54	47	64	53	47	40
1.00	75	64	56	74	63	56	71	65	56	48
1.25	82	72	64	81	71	64	78	69	63	56
1.50	87	77	70	86	76	70	83	75	69	61
2.00	94	86	79	93	85	78	89	82	77	69
2.50	98	91	85	96	89	84	92	86	82	73
3.00	102	95	89	100	93	88	95	90	86	77
4.00	106	100	96	104	98	94	99	95	91	82
5.00	108	104	100	106	102	98	101	98	95	85
ROOM INDEX	UF(total)									Direct
According to DIN EN 13032-2 2004			Suspended				SHRNOM = 1.25			

C Range: 0 - 360DEG
 C Interval: 45.0DEG
 Test Speed: HIGH
 Temperature:25.3DEG
 Operators:007
 Test Date:2016-08-12

γ Range: 0 - 180DEG
 γ Interval: 1.0DEG
 Test System:EVERFINE GO-2000B_V1 SYSTEM V2.0.362
 Humidity:65.0%
 Test Distance:5.560m [K=1.0000]
 Remarks: HBL-60W-120

ISOCANDELA DIAGRAM

Test:U:220.0V I:0.2760A P:59.00W PF:0.9740 Freq:50.00Hz Lamp Flux:8511.55x1 lm		
NAME:	TYPE:	WEIGHT:
SPEC.:	DIM.:	SERIAL No.:
MFR.:	SUR.:0.1275*0.1275*3.14	Shielding Angle:120

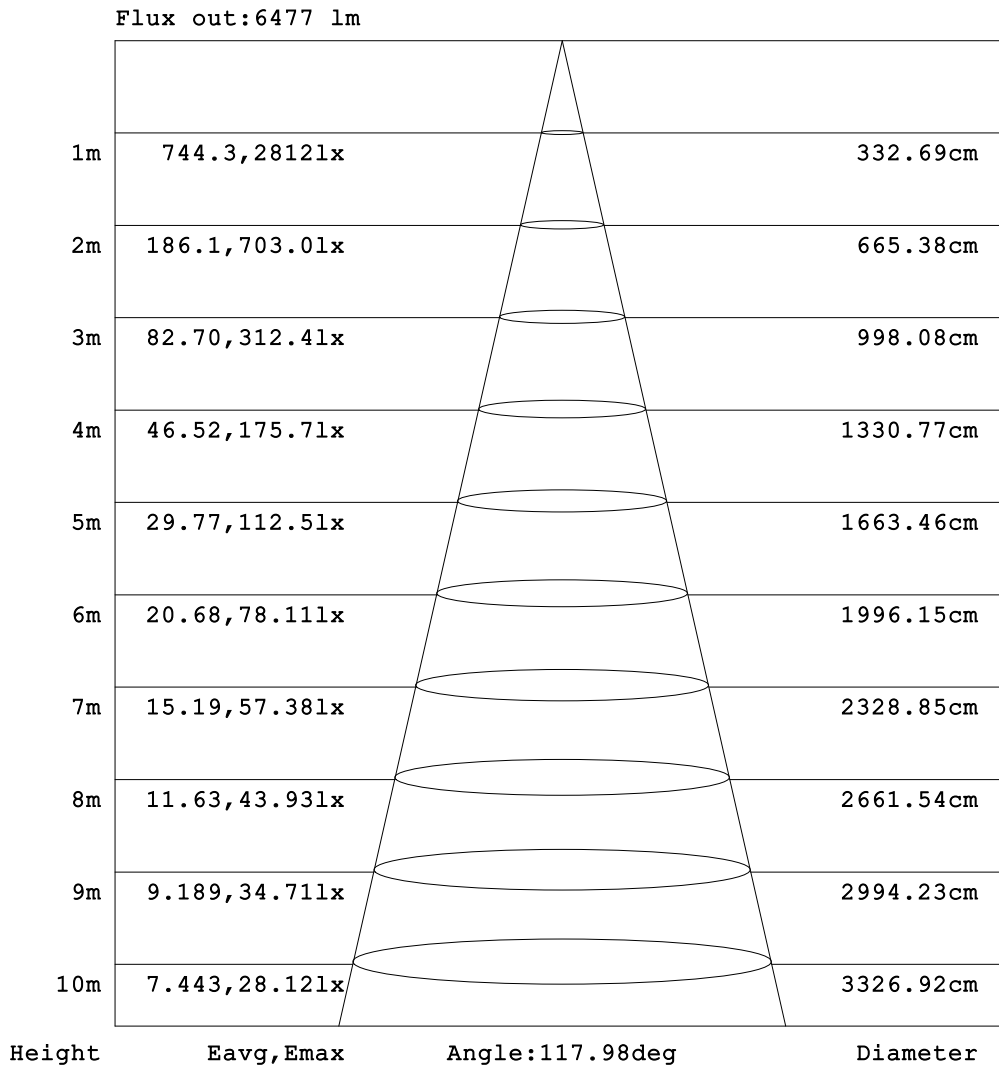


C Range: 0 - 360DEG
 C Interval: 45.0DEG
 Test Speed: HIGH
 Temperature:25.3DEG
 Operators:007
 Test Date:2016-08-12

γ Range: 0 - 180DEG
 γ Interval: 1.0DEG
 Test System:EVERFINE GO-2000B_V1 SYSTEM V2.0.362
 Humidity:65.0%
 Test Distance:5.560m [K=1.0000]
 Remarks: HBL-60W-120

AAI Figure

Test:U:220.0V I:0.2760A P:59.00W PF:0.9740 Freq:50.00Hz Lamp Flux:8511.55x1 lm		
NAME:	TYPE:	WEIGHT:
SPEC.:	DIM.:	SERIAL No.:
MFR.:	SUR.:0.1275*0.1275*3.14	Shielding Angle:120



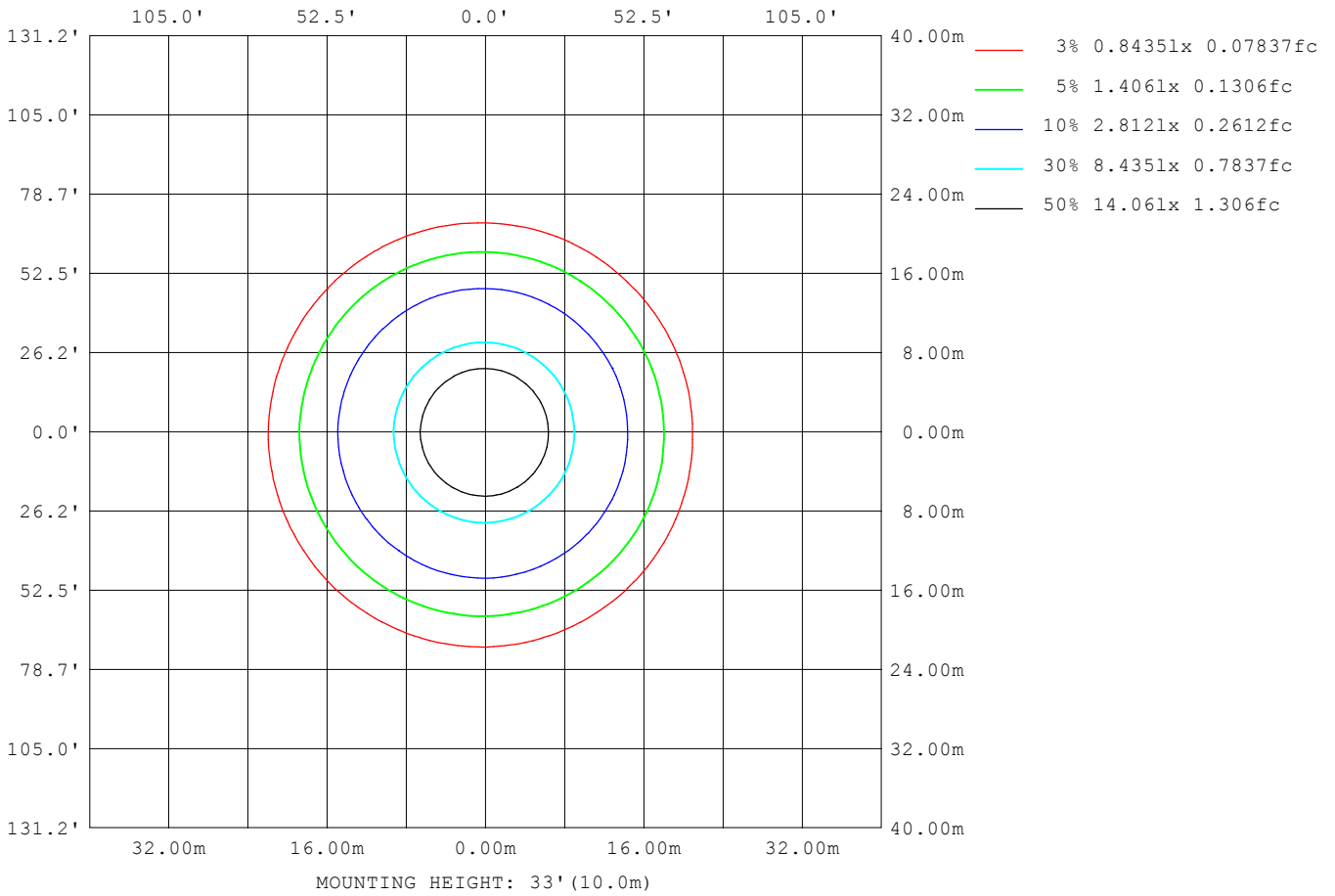
Note:The Curves indicate the illuminated area and the average illumination when the luminaire is at different distance.

C Range: 0 - 360DEG
 C Interval: 45.0DEG
 Test Speed: HIGH
 Temperature:25.3DEG
 Operators:007
 Test Date:2016-08-12

γ Range: 0 - 180DEG
 γ Interval: 1.0DEG
 Test System:EVERFINE GO-2000B_V1 SYSTEM V2.0.362
 Humidity:65.0%
 Test Distance:5.560m [K=1.0000]
 Remarks: HBL-60W-120

ISOLUX DIAGRAM

Test:U:220.0V I:0.2760A P:59.00W PF:0.9740 Freq:50.00Hz Lamp Flux:8511.55x1 lm		
NAME:	TYPE:	WEIGHT:
SPEC.:	DIM.:	SERIAL No.:
MFR.:	SUR.:0.1275*0.1275*3.14	Shielding Angle:120



C Range: 0 - 360DEG
 C Interval: 45.0DEG
 Test Speed: HIGH
 Temperature:25.3DEG
 Operators:007
 Test Date:2016-08-12

γ Range: 0 - 180DEG
 γ Interval: 1.0DEG
 Test System:EVERFINE GO-2000B_V1 SYSTEM V2.0.362
 Humidity:65.0%
 Test Distance:5.560m [K=1.0000]
 Remarks: HBL-60W-120

LED Avg.L Report

Test:U:220.0V I:0.2760A P:59.00W PF:0.9740 Freq:50.00Hz Lamp Flux:8511.55x1 lm		
NAME:	TYPE:	WEIGHT:
SPEC.:	DIM.:	SERIAL No.:
MFR.:	SUR.:0.1275*0.1275*3.14	Shielding Angle:120

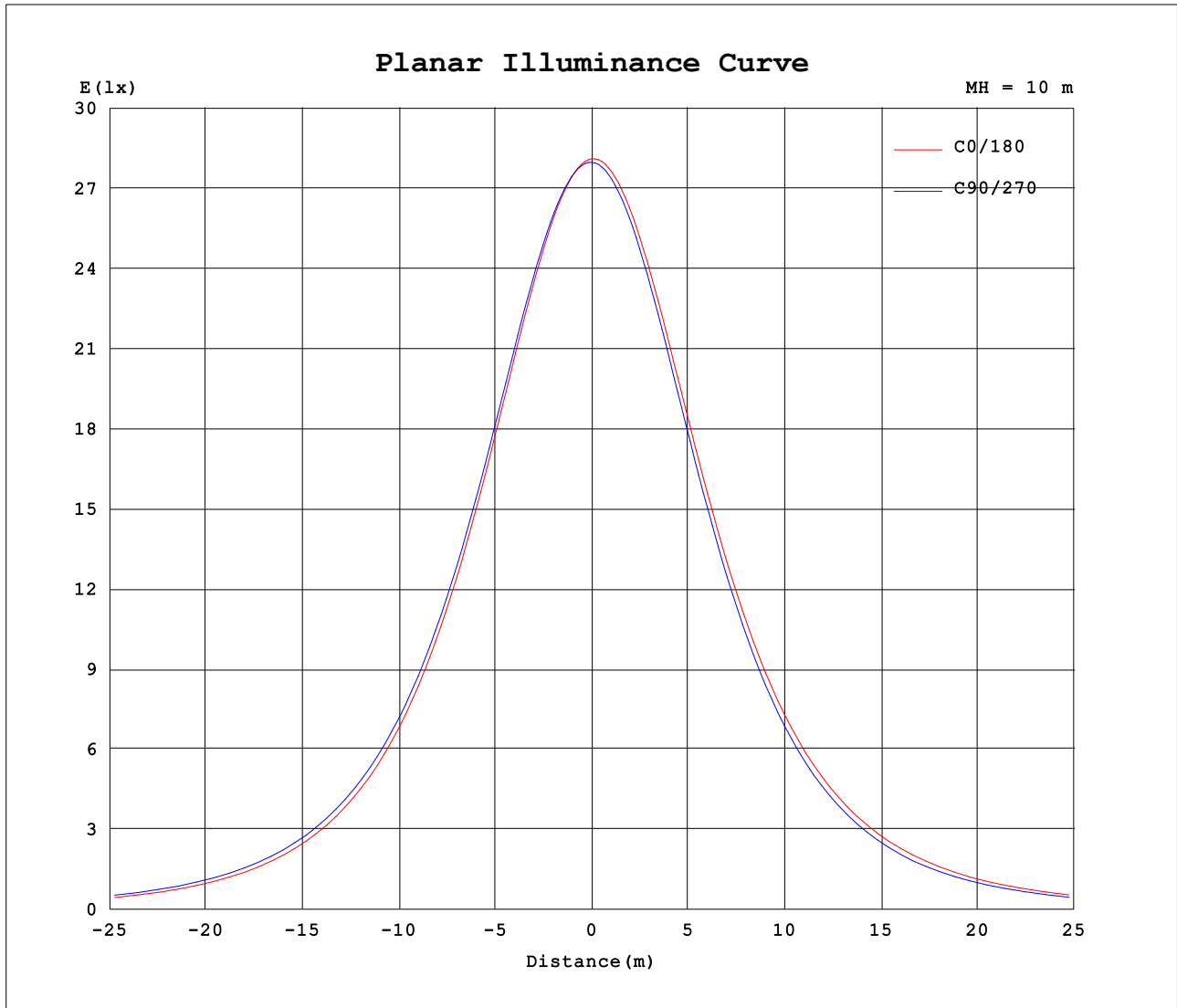
AvgL	cd/m2
L_0~180 (65) av	51771
L_0~180 (75) av	44972
L_0~180 (85) av	16221
L_90~270 (65) av	51541
L_90~270 (75) av	44739
L_90~270 (85) av	13270
L_45 (65) av	51516
L_45 (75) av	44561
L_45 (85) av	14025

Standard: GB/T 29293-2012

C Range: 0 - 360DEG
 C Interval: 45.0DEG
 Test Speed: HIGH
 Temperature:25.3DEG
 Operators:007
 Test Date:2016-08-12

γ Range: 0 - 180DEG
 γ Interval: 1.0DEG
 Test System:EVERFINE GO-2000B_V1 SYSTEM V2.0.362
 Humidity:65.0%
 Test Distance:5.560m [K=1.0000]
 Remarks: HBL-60W-120

Planar Illuminance Curve



C Range: 0 - 360DEG
 C Interval: 45.0DEG
 Test Speed: HIGH
 Temperature: 25.3DEG
 Operators: 007
 Test Date: 2016-08-12

γ Range: 0 - 180DEG
 γ Interval: 1.0DEG
 Test System: EVERFINE GO-2000B_V1 SYSTEM V2.0.362
 Humidity: 65.0%
 Test Distance: 5.560m [K=1.0000]
 Remarks: HBL-60W-120

LUMINOUS DISTRIBUTION INTENSITY DATA

Test:U:220.0V I:0.2760A P:59.00W PF:0.9740 Freq:50.00Hz Lamp Flux:8511.55x1 lm		
NAME:	TYPE:	WEIGHT:
SPEC.:	DIM.:	SERIAL No.:
MFR.:	SUR.:0.1275*0.1275*3.14	Shielding Angle:120

Table--1

UNIT: cd

C (DEG) \ γ (DEG)	0	45	90	135	180	225	270	315										
0	2812	2805	2799	2793	2812	2805	2799	2793										
5	2794	2794	2793	2792	2809	2796	2784	2774										
10	2756	2762	2768	2770	2787	2767	2749	2736										
15	2697	2710	2723	2728	2744	2718	2693	2677										
20	2619	2639	2657	2666	2681	2649	2619	2599										
25	2522	2548	2572	2585	2598	2560	2525	2501										
30	2403	2437	2466	2483	2495	2450	2410	2384										
35	2265	2306	2342	2363	2373	2322	2275	2244										
40	2107	2153	2196	2220	2229	2172	2120	2086										
45	1928	1982	2030	2058	2066	2003	1945	1909										
50	1730	1790	1846	1877	1883	1813	1751	1710										
55	1511	1578	1640	1675	1679	1603	1536	1493										
60	1274	1343	1415	1455	1456	1374	1299	1256										
65	1022	1097	1173	1210	1210	1129	1049	1005										
70	759	838	916	957	954	870	788	743										
75	496	576	652	696	692	605	529	477										
80	202	286	362	415	407	316	236	194										
85	6.08	42.6	99.0	142	138	61.3	19.0	3.41										
90	5.92	5.45	5.35	5.23	3.15	2.91	3.07	3.27										
95	7.56	7.04	6.55	6.18	3.51	3.88	4.22	4.44										
100	9.32	8.72	8.18	7.81	4.70	5.13	5.50	5.71										
105	11.1	10.5	9.91	9.54	5.98	6.45	6.90	7.07										
110	12.9	12.2	11.7	11.3	7.38	7.84	8.42	8.51										
115	14.7	13.9	13.6	13.2	8.86	9.32	10.0	10.0										
120	16.5	15.8	15.5	15.1	10.4	10.9	11.6	11.6										
125	18.1	17.6	17.3	16.8	12.0	12.4	13.2	13.2										
130	19.5	19.2	18.8	18.5	13.5	13.8	14.6	14.7										
135	20.6	20.4	20.1	19.7	14.8	15.0	15.7	15.8										
140	21.5	21.4	21.2	20.7	16.0	16.1	16.8	16.8										
145	22.3	22.3	22.2	21.8	17.3	17.4	18.1	18.0										
150	22.7	22.9	22.7	22.4	18.4	18.7	19.3	19.2										
155	23.6	23.8	23.5	23.3	19.5	19.9	20.6	20.4										
160	24.6	24.7	24.4	24.2	20.3	20.5	21.1	21.1										
165	25.2	25.0	24.8	24.6	22.0	22.1	22.8	22.7										
170	25.8	25.4	25.3	25.3	23.8	23.9	24.6	24.2										
175	25.9	25.6	25.5	25.8	25.0	24.9	25.2	25.1										
180	25.9	25.8	25.9	25.7	26.1	25.7	25.8	25.8										

C Range: 0 - 360DEG
 C Interval: 45.0DEG
 Test Speed: HIGH
 Temperature:25.3DEG
 Operators:007
 Test Date:2016-08-12

γ Range: 0 - 180DEG
 γ Interval: 1.0DEG
 Test System:EVERFINE GO-2000B_V1 SYSTEM V2.0.362
 Humidity:65.0%
 Test Distance:5.560m [K=1.0000]
 Remarks: HBL-60W-120