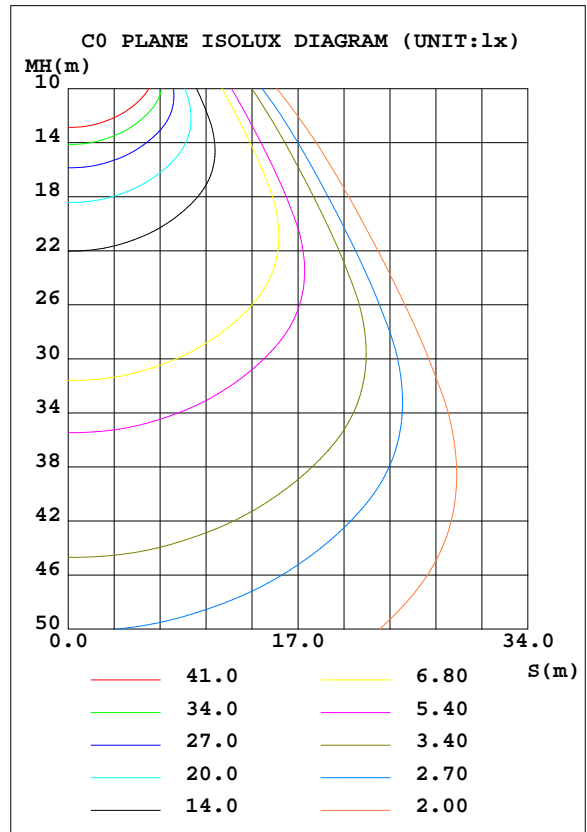
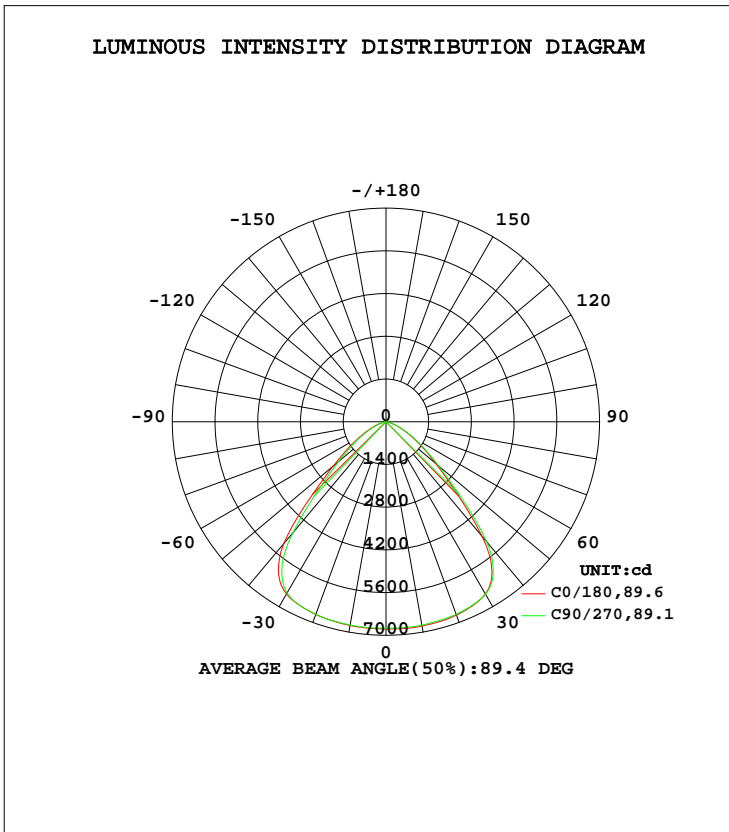


LUMINAIRE PHOTOMETRIC TEST REPORT

Test:U:220.0V I:0.4540A P:98.80W PF:0.9800 Freq:50.00Hz Lamp Flux:14790.4x1 lm		
NAME:	TYPE:LED	WEIGHT:4.8KG
SPEC.:	DIM.: 300*300*190	SERIAL No.:
MFR.:	SUR.:0.1275*0.1275*3.14	Shielding Angle:120

DATA OF LAMP		PHOTOMETRIC DATA Eff: 149.7 lm/W			
MODEL	HBL-150-90	Imax(cd)	6805	S/MH(C0/180)	1.31
NOMINAL POWER(W)	100	LOR(%)	100.0	S/MH(C90/270)	1.27
RATED VOLTAGE(V)	220	TOTAL FLUX(lm)	14790	$\eta$ UP, DN(C0-180)	0.6,50.1
NOMINAL FLUX(lm)	14790.4	CIE CLASS	DIRECT	$\eta$ UP, DN(C180-360)	0.4,48.8
LAMPS INSIDE	1	$\eta$ up(%)	1.1	CIBSE SHR NOM	1.25
TEST VOLTAGE(V)	220	$\eta$ down(%)	98.9	CIBSE SHR MAX	1.30



C Range: 0 - 360DEG  
 C Interval: 45.0DEG  
 Test Speed: HIGH  
 Temperature:25.3DEG  
 Operators:007  
 Test Date:2016-08-19

$\gamma$  Range: 0 - 180DEG  
 $\gamma$  Interval: 1.0DEG  
 Test System:EVERFINE GO-2000B\_V1 SYSTEM V2.0.362  
 Humidity:65.0%  
 Test Distance:5.560m [K=1.0000]  
 Remarks: HBL-100-90

ZONAL FLUX DIAGRAM

ZONAL FLUX DIAGRAM:

γ	C0	C45	C90	C135	C180	C225	C270	C315	γ	Φ zone	Φ total	%lum, lamp
10	6798	6789	6769	6755	6781	6772	6764	6764	0- 10	646.9	646.9	4.54,4.54
20	6743	6741	6716	6705	6719	6726	6724	6736	10- 20	1914	2561	18,18
30	6518	6535	6524	6509	6520	6496	6482	6486	20- 30	3073	5634	39.5,39.5
40	4909	5067	5138	5125	5204	4867	4747	4659	30- 40	3717	9351	65.6,65.6
50	2142	2258	2260	2246	2253	2105	2030	2037	40- 50	2597	11948	83.8,83.8
60	967.4	1010	1012	1002	988.4	933.7	899.2	908.8	50- 60	1332	13280	93.1,93.1
70	346.6	369.3	377.9	363.6	343.8	321.7	310.5	324.6	60- 70	610.2	13890	97.4,97.4
80	64.15	72.40	76.88	74.71	66.18	58.96	56.25	59.07	70- 80	189.0	14079	98.7,98.7
90	3.546	3.302	3.244	3.224	1.516	1.624	1.606	1.614	80- 90	25.21	14104	98.9,98.9
100	8.534	7.896	7.686	7.675	3.740	3.956	3.946	3.964	90-100	4.321	14108	99,99
110	17.15	16.15	15.74	15.78	8.532	8.939	8.977	8.931	100-110	9.442	14118	99,99
120	27.64	26.70	26.55	26.54	16.21	16.59	16.82	16.59	110-120	16.79	14135	99.1,99.1
130	37.97	37.33	37.80	37.41	25.19	25.37	25.94	25.66	120-130	23.86	14159	99.3,99.3
140	46.09	46.30	46.01	45.64	33.45	33.27	34.25	33.51	130-140	27.67	14186	99.5,99.5
150	51.76	53.26	52.01	51.63	40.48	40.29	41.12	40.65	140-150	27.10	14213	99.7,99.7
160	57.14	57.21	57.26	57.07	45.97	45.28	46.18	46.32	150-160	22.61	14436	99.8,99.8
170	63.91	62.51	62.53	62.30	58.25	57.65	58.73	58.52	160-170	15.70	14552	100,100
180	66.11	65.49	65.53	66.05	66.43	65.29	66.50	65.62	170-180	5.994	14790	100,100
DEG	LUMINOUS INTENSITY:cd									UNIT:lm		

Conical surface Flux(90deg): 11270lm

%lum = 76.2%  
%lamp = 76.2%

Conical surface Flux(120deg): 13770 lm

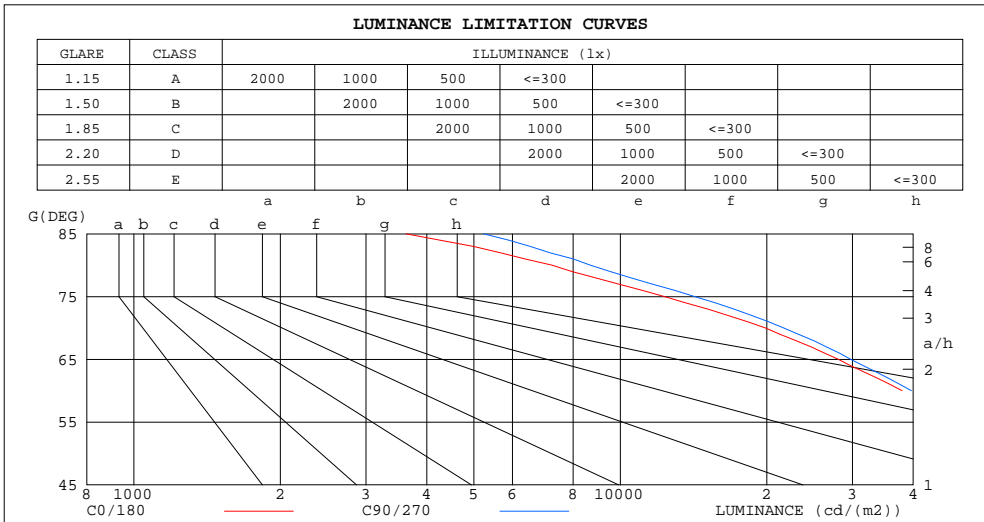
%lum = 93.1%  
%lamp = 93.1%

C Range: 0 - 360DEG  
C Interval: 45.0DEG  
Test Speed: HIGH  
Temperature:25.3DEG  
Operators:007  
Test Date:2016-08-19

γ Range: 0 - 180DEG  
γ Interval: 1.0DEG  
Test System:EVERFINE GO-2000B\_V1 SYSTEM V2.0.362  
Humidity:65.0%  
Test Distance:5.560m [K=1.0000]  
Remarks: HBL-100-90

LUMINANCE LIMITATION CURVES

Test:U:220.0V I:0.4540A P:98.80W PF:0.9800 Freq:50.00Hz Lamp Flux:14790.4x1 lm		
NAME:	TYPE:LED	WEIGHT:4.8KG
SPEC.:	DIM.: 300*300*190	SERIAL No.:
MFR.:	SUR.:0.1275*0.1275*3.14	Shielding Angle:120



LUMINANCE cd/(m2)		
G (DEG)	C0/180	C90/270
85	3630	5235
80	7244	8682
75	12317	14218
70	19872	21666
65	28058	29762
60	37936	39667
55	49872	52323
50	65344	68942
45	89203	95143

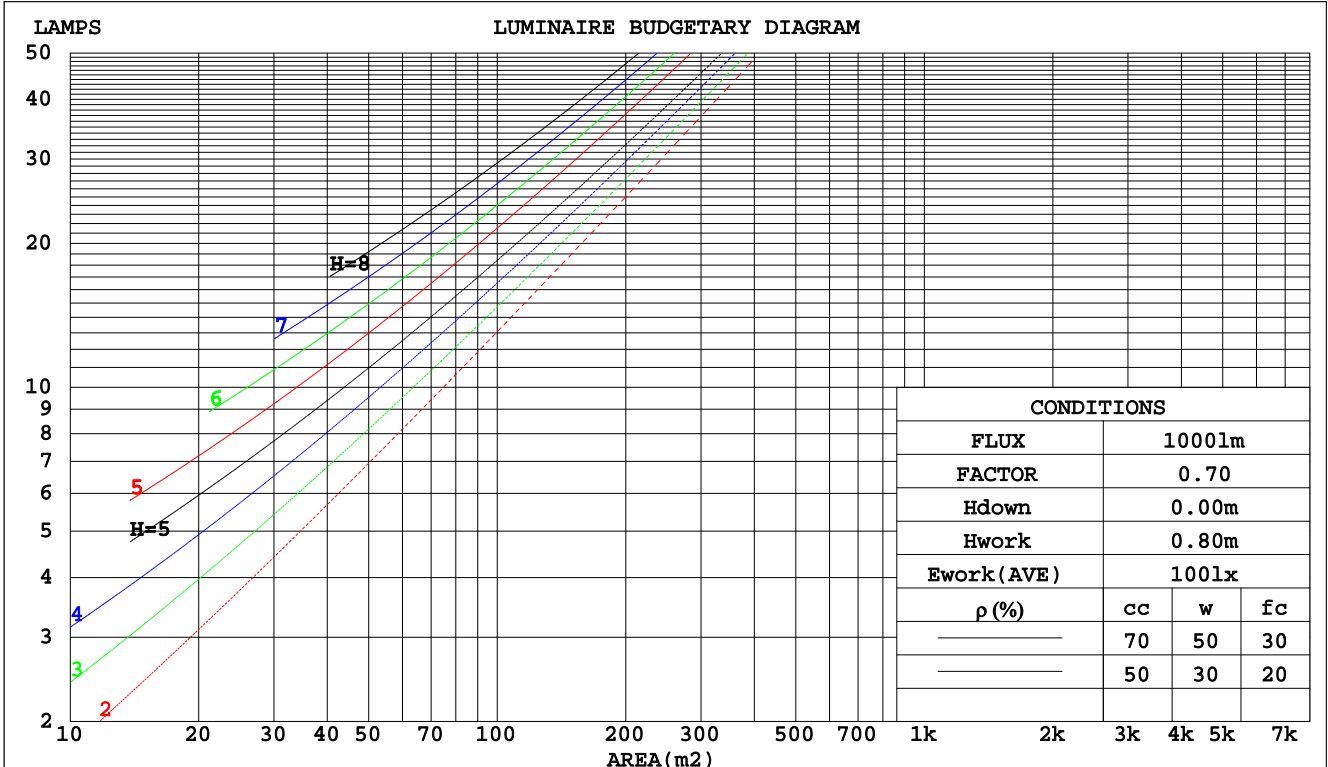
C Range: 0 - 360DEG  
 C Interval: 45.0DEG  
 Test Speed: HIGH  
 Temperature:25.3DEG  
 Operators:007  
 Test Date:2016-08-19

γ Range: 0 - 180DEG  
 γ Interval: 1.0DEG  
 Test System:EVERFINE GO-2000B\_V1 SYSTEM V2.0.362  
 Humidity:65.0%  
 Test Distance:5.560m [K=1.0000]  
 Remarks: HBL-100-90

CU AND LUMINAIRE BUDGETARY ESTIMATE DIAGRAM

Test:U:220.0V I:0.4540A P:98.80W PF:0.9800 Freq:50.00Hz Lamp Flux:14790.4x1 lm		
NAME:	TYPE:LED	WEIGHT:4.8KG
SPEC.:	DIM.: 300*300*190	SERIAL No.:
MFR.:	SUR.:0.1275*0.1275*3.14	Shielding Angle:120

pcc	80%			70%			50%			30%			10%			0
	50%	30%	10%	50%	30%	10%	50%	30%	10%	50%	30%	10%	50%	30%	10%	0
pw																0
pfc	20%			20%			20%			20%			20%			0
RCR	RCR:Room Cavity Ratio      Coefficients of Utilization(CU)															
0.0	1.19	1.19	1.19	1.16	1.16	1.16	1.11	1.11	1.11	1.06	1.06	1.06	1.01	1.01	1.01	.99
1.0	1.08	1.05	1.02	1.05	1.03	.90	1.01	.99	.97	.97	.95	.93	.93	.92	.91	.89
2.0	.97	.92	.87	.95	.90	.86	.92	.88	.84	.88	.85	.82	.85	.83	.80	.78
3.0	.88	.81	.76	.86	.80	.75	.83	.78	.74	.80	.76	.72	.78	.74	.71	.69
4.0	.79	.72	.67	.78	.71	.66	.76	.70	.65	.73	.68	.64	.71	.67	.63	.61
5.0	.72	.65	.59	.71	.64	.59	.69	.63	.58	.67	.62	.57	.65	.60	.57	.55
6.0	.66	.58	.53	.65	.58	.52	.63	.57	.52	.61	.56	.51	.60	.55	.51	.49
7.0	.60	.53	.47	.60	.52	.47	.58	.51	.47	.57	.51	.46	.55	.50	.46	.44
8.0	.55	.48	.43	.55	.48	.43	.53	.47	.42	.52	.46	.42	.51	.46	.42	.40
9.0	.51	.44	.39	.51	.44	.39	.49	.43	.39	.48	.43	.38	.47	.42	.38	.36
10.0	.47	.40	.36	.47	.40	.35	.46	.40	.35	.45	.39	.35	.44	.39	.35	.33



C Range: 0 - 360DEG  
 C Interval: 45.0DEG  
 Test Speed: HIGH  
 Temperature:25.3DEG  
 Operators:007  
 Test Date:2016-08-19

γ Range: 0 - 180DEG  
 γ Interval: 1.0DEG  
 Test System:EVERFINE GO-2000B\_V1 SYSTEM V2.0.362  
 Humidity:65.0%  
 Test Distance:5.560m [K=1.0000]  
 Remarks: HBL-100-90

WEC AND CCEC

Test:U:220.0V I:0.4540A P:98.80W PF:0.9800 Freq:50.00Hz Lamp Flux:14790.4x1 lm		
NAME:	TYPE:LED	WEIGHT:4.8KG
SPEC.:	DIM.: 300*300*190	SERIAL No.:
MFR.:	SUR.:0.1275*0.1275*3.14	Shielding Angle:120

ρcc	80%			70%			50%			30%			10%			0
ρw	50%	30%	10%	50%	30%	10%	50%	30%	10%	50%	30%	10%	50%	30%	10%	0
ρfc	20%			20%			20%			20%			20%			0
RCR	RCR:Room Cavity Ratio						Wall Exitance Coefficients(WEC)									
0.0																
1.0	.231	.131	.042	.224	.128	.041	.210	.121	.039	.198	.114	.037	.187	.108	.035	
2.0	.225	.124	.038	.219	.121	.037	.208	.115	.036	.197	.110	.035	.187	.106	.033	
3.0	.215	.115	.034	.210	.112	.034	.200	.108	.033	.190	.104	.032	.181	.100	.031	
4.0	.204	.106	.031	.199	.104	.031	.190	.101	.030	.182	.098	.029	.174	.095	.029	
5.0	.193	.098	.029	.189	.097	.028	.181	.094	.028	.173	.092	.027	.166	.089	.027	
6.0	.183	.092	.026	.179	.090	.026	.172	.088	.026	.165	.086	.025	.159	.084	.025	
7.0	.173	.085	.024	.169	.084	.024	.163	.082	.024	.157	.081	.023	.151	.079	.023	
8.0	.164	.080	.023	.161	.079	.022	.155	.077	.022	.150	.076	.022	.144	.074	.022	
9.0	.155	.075	.021	.153	.074	.021	.147	.073	.021	.143	.071	.020	.138	.070	.020	
10.0	.148	.071	.020	.145	.070	.020	.140	.069	.019	.136	.068	.019	.132	.066	.019	

ρcc	80%			70%			50%			30%			10%			0
ρw	50%	30%	10%	50%	30%	10%	50%	30%	10%	50%	30%	10%	50%	30%	10%	0
ρfc	20%			20%			20%			20%			20%			0
RCR	RCR:Room Cavity Ratio						Ceiling Cavity Exitance Coefficients(CCEC)									
0.0	.199	.199	.199	.170	.170	.170	.116	.116	.116	.067	.067	.067	.021	.021	.021	
1.0	.183	.165	.149	.157	.142	.128	.107	.097	.089	.062	.056	.052	.020	.018	.017	
2.0	.172	.141	.114	.147	.121	.099	.101	.084	.069	.058	.049	.040	.019	.016	.013	
3.0	.162	.122	.090	.139	.106	.078	.096	.073	.055	.055	.043	.032	.018	.014	.011	
4.0	.154	.108	.073	.132	.094	.064	.091	.065	.045	.053	.038	.027	.017	.012	.009	
5.0	.147	.098	.061	.126	.084	.053	.087	.059	.038	.050	.035	.022	.016	.011	.007	
6.0	.140	.089	.052	.121	.077	.045	.083	.054	.032	.048	.032	.019	.016	.010	.006	
7.0	.134	.082	.045	.115	.071	.039	.080	.050	.028	.046	.029	.017	.015	.010	.005	
8.0	.128	.076	.040	.111	.066	.035	.076	.046	.025	.044	.027	.015	.014	.009	.005	
9.0	.123	.071	.036	.106	.062	.031	.073	.043	.022	.043	.026	.013	.014	.008	.004	
10.0	.118	.067	.033	.102	.058	.029	.071	.041	.020	.041	.024	.012	.013	.008	.004	

C Range: 0 - 360DEG  
 C Interval: 45.0DEG  
 Test Speed: HIGH  
 Temperature:25.3DEG  
 Operators:007  
 Test Date:2016-08-19

γ Range: 0 - 180DEG  
 γ Interval: 1.0DEG  
 Test System:EVERFINE GO-2000B\_V1 SYSTEM V2.0.362  
 Humidity:65.0%  
 Test Distance:5.560m [K=1.0000]  
 Remarks: HBL-100-90

UGR(Unified Glare Rating) Table

Test:U:220.0V I:0.4540A P:98.80W PF:0.9800 Freq:50.00Hz Lamp Flux:14790.4x1 lm										
NAME:			TYPE:LED				WEIGHT:4.8KG			
SPEC.:			DIM.: 300*300*190				SERIAL No.:			
MFR.:			SUR.:0.1275*0.1275*3.14				Shielding Angle:120			
ceiling/cavity	0.7	0.7	0.5	0.5	0.3	0.7	0.7	0.5	0.5	0.3
walls	0.5	0.3	0.5	0.3	0.3	0.5	0.3	0.5	0.3	0.3
working plane	0.2	0.2	0.2	0.2	0.2	0.2	0.2	0.2	0.2	0.2
Room dimensions	Viewed crosswise					Viewed endwise				
x = 2H y = 2H	16.7	18.0	17.0	18.2	18.4	16.9	18.2	17.2	18.4	18.6
3H	16.9	18.0	17.2	18.3	18.5	17.1	18.2	17.4	18.5	18.7
4H	16.9	18.0	17.2	18.2	18.5	17.1	18.2	17.4	18.4	18.7
6H	16.8	17.8	17.1	18.1	18.4	17.0	18.1	17.4	18.3	18.6
8H	16.8	17.8	17.1	18.0	18.3	17.0	18.0	17.3	18.3	18.6
12H	16.7	17.7	17.1	18.0	18.3	17.0	17.9	17.3	18.2	18.5
4H 2H	16.8	17.9	17.1	18.1	18.4	16.9	18.0	17.2	18.3	18.5
3H	17.0	18.0	17.4	18.3	18.6	17.2	18.1	17.6	18.4	18.8
4H	17.1	17.9	17.4	18.2	18.6	17.3	18.1	17.6	18.4	18.8
6H	17.0	17.8	17.4	18.1	18.5	17.2	18.0	17.6	18.3	18.7
8H	17.0	17.7	17.4	18.0	18.4	17.2	17.9	17.6	18.3	18.7
12H	16.9	17.6	17.4	18.0	18.4	17.2	17.8	17.6	18.2	18.6
8H 4H	17.0	17.7	17.4	18.0	18.4	17.2	17.9	17.6	18.2	18.6
6H	17.0	17.5	17.4	17.9	18.4	17.2	17.7	17.6	18.1	18.6
8H	16.9	17.4	17.4	17.9	18.3	17.1	17.6	17.6	18.1	18.5
12H	16.9	17.3	17.4	17.8	18.3	17.1	17.5	17.6	18.0	18.5
12H 4H	16.9	17.6	17.4	18.0	18.4	17.1	17.8	17.6	18.2	18.6
6H	16.9	17.4	17.4	17.9	18.3	17.1	17.6	17.6	18.1	18.5
8H	16.9	17.3	17.4	17.8	18.3	17.1	17.5	17.6	18.0	18.5
Variations with the observer position at spacings:										
S = 1.0H	+ 1.3 / - 2.0					+ 1.3 / - 1.9				
1.5H	+ 1.6 / - 1.2					+ 1.5 / - 1.3				
2.0H	+ 2.4 / - 2.2					+ 2.5 / - 2.2				

CIE Pub.117, 14258 lm Total Lamp Luminous Flux Correct (8log(F/F0) = 9.2)

C Range: 0 - 360DEG  
 C Interval: 45.0DEG  
 Test Speed: HIGH  
 Temperature:25.3DEG  
 Operators:007  
 Test Date:2016-08-19

γ Range: 0 - 180DEG  
 γ Interval: 1.0DEG  
 Test System:EVERFINE GO-2000B\_V1 SYSTEM V2.0.362  
 Humidity:65.0%  
 Test Distance:5.560m [K=1.0000]  
 Remarks: HBL-100-90

UTILIZATION FACTORS TABLE

Test:U:220.0V I:0.4540A P:98.80W PF:0.9800 Freq:50.00Hz Lamp Flux:14790.4x1 lm		
NAME:	TYPE:LED	WEIGHT:4.8KG
SPEC.:	DIM.: 300*300*190	SERIAL No.:
MFR.:	SUR.:0.1275*0.1275*3.14	Shielding Angle:120

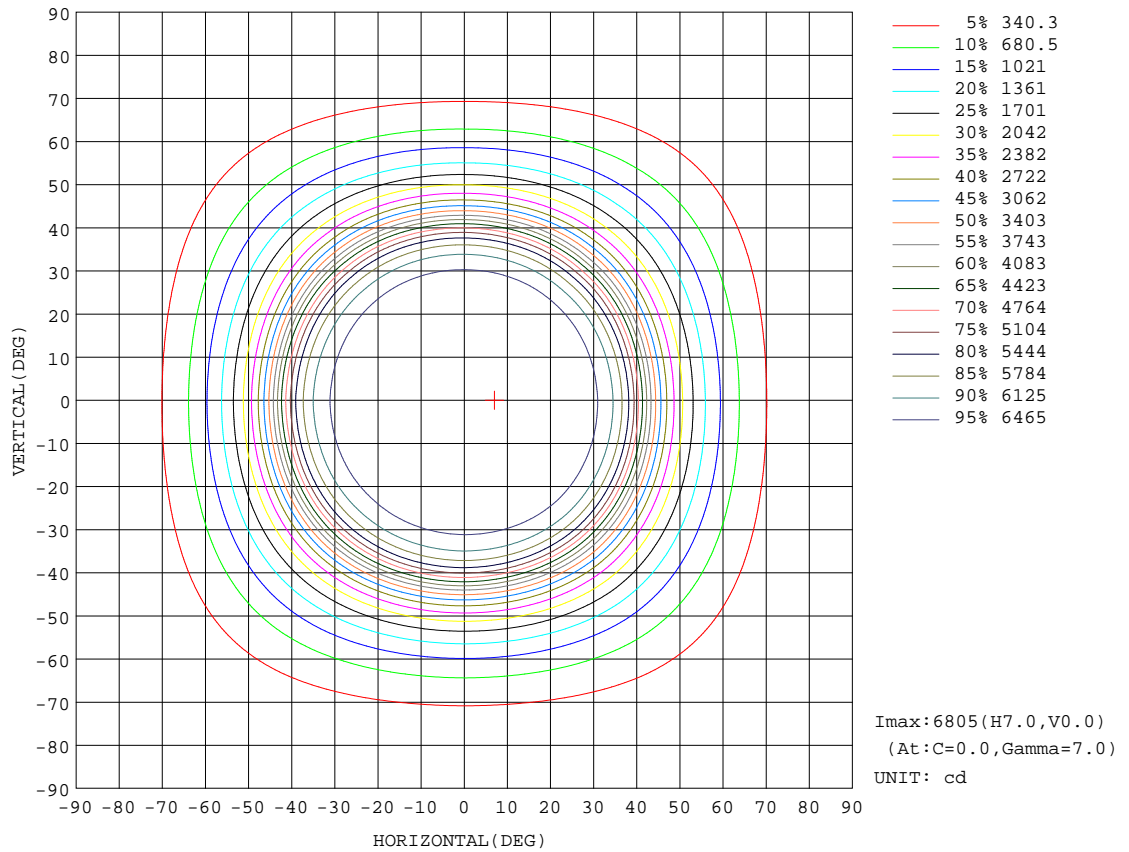
REFLECTANCE										
Ceiling	0.8	0.8	0.8	0.7	0.7	0.7	0.5	0.5	0.5	0
Walls	0.7	0.5	0.3	0.7	0.5	0.3	0.7	0.5	0.3	0
Working plane	0.2	0.2	0.2	0.2	0.2	0.2	0.2	0.2	0.2	0
ROOM INDEX	UTILIZATION FACTORS(PERCENT) $k(RI) \times RCR = 5$									
k = 0.60	70	60	55	69	60	55	68	60	54	49
0.80	79	70	65	79	70	65	77	69	64	59
1.00	87	79	73	86	78	73	84	79	72	67
1.25	93	85	80	92	85	80	89	83	79	73
1.50	97	90	85	96	89	84	93	87	83	77
2.00	102	96	91	101	95	91	97	93	89	82
2.50	105	99	95	103	98	94	99	95	92	85
3.00	107	102	98	105	101	97	101	98	95	87
4.00	110	106	103	108	104	101	104	101	98	90
5.00	112	108	105	109	106	104	105	103	101	92
ROOM INDEX	UF(total)									Direct
According to DIN EN 13032-2 2004			Suspended				SHRNOM = 1.25			

C Range: 0 - 360DEG  
 C Interval: 45.0DEG  
 Test Speed: HIGH  
 Temperature:25.3DEG  
 Operators:007  
 Test Date:2016-08-19

$\gamma$  Range: 0 - 180DEG  
 $\gamma$  Interval: 1.0DEG  
 Test System:EVERFINE GO-2000B\_V1 SYSTEM V2.0.362  
 Humidity:65.0%  
 Test Distance:5.560m [K=1.0000]  
 Remarks: HBL-100-90

**ISOCANDELA DIAGRAM**

Test:U:220.0V I:0.4540A P:98.80W PF:0.9800 Freq:50.00Hz Lamp Flux:14790.4x1 lm		
NAME:	TYPE:LED	WEIGHT:4.8KG
SPEC.:	DIM.: 300*300*190	SERIAL No.:
MFR.:	SUR.:0.1275*0.1275*3.14	Shielding Angle:120



C Range: 0 - 360DEG  
 C Interval: 45.0DEG  
 Test Speed: HIGH  
 Temperature:25.3DEG  
 Operators:007  
 Test Date:2016-08-19

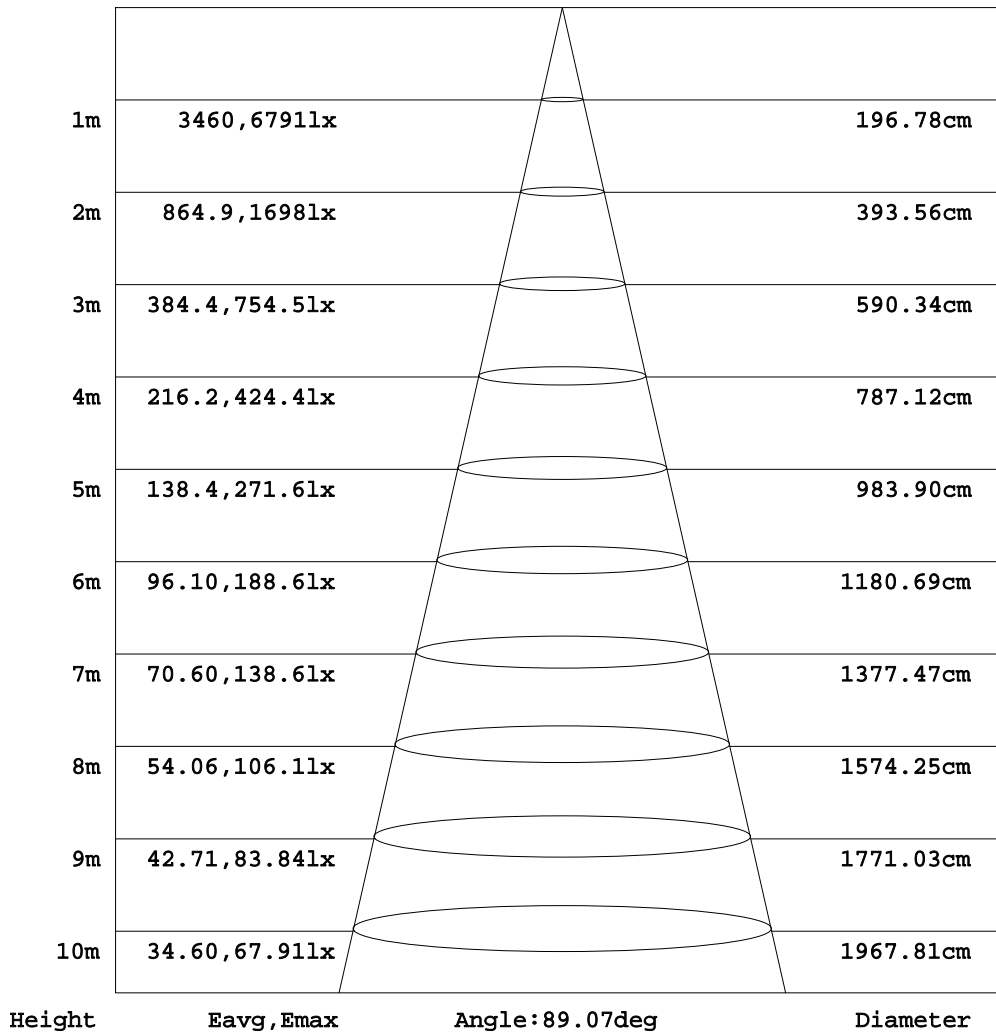
γ Range: 0 - 180DEG  
 γ Interval: 1.0DEG  
 Test System:EVERFINE GO-2000B\_V1 SYSTEM V2.0.362  
 Humidity:65.0%  
 Test Distance:5.560m [K=1.0000]  
 Remarks: HBL-100-90



AAI Figure

Test:U:220.0V I:0.4540A P:98.80W PF:0.9800 Freq:50.00Hz Lamp Flux:14790.4x1 lm		
NAME:	TYPE:LED	WEIGHT:4.8KG
SPEC.:	DIM.: 300*300*190	SERIAL No.:
MFR.:	SUR.:0.1275*0.1275*3.14	Shielding Angle:120

Flux out:10869 lm



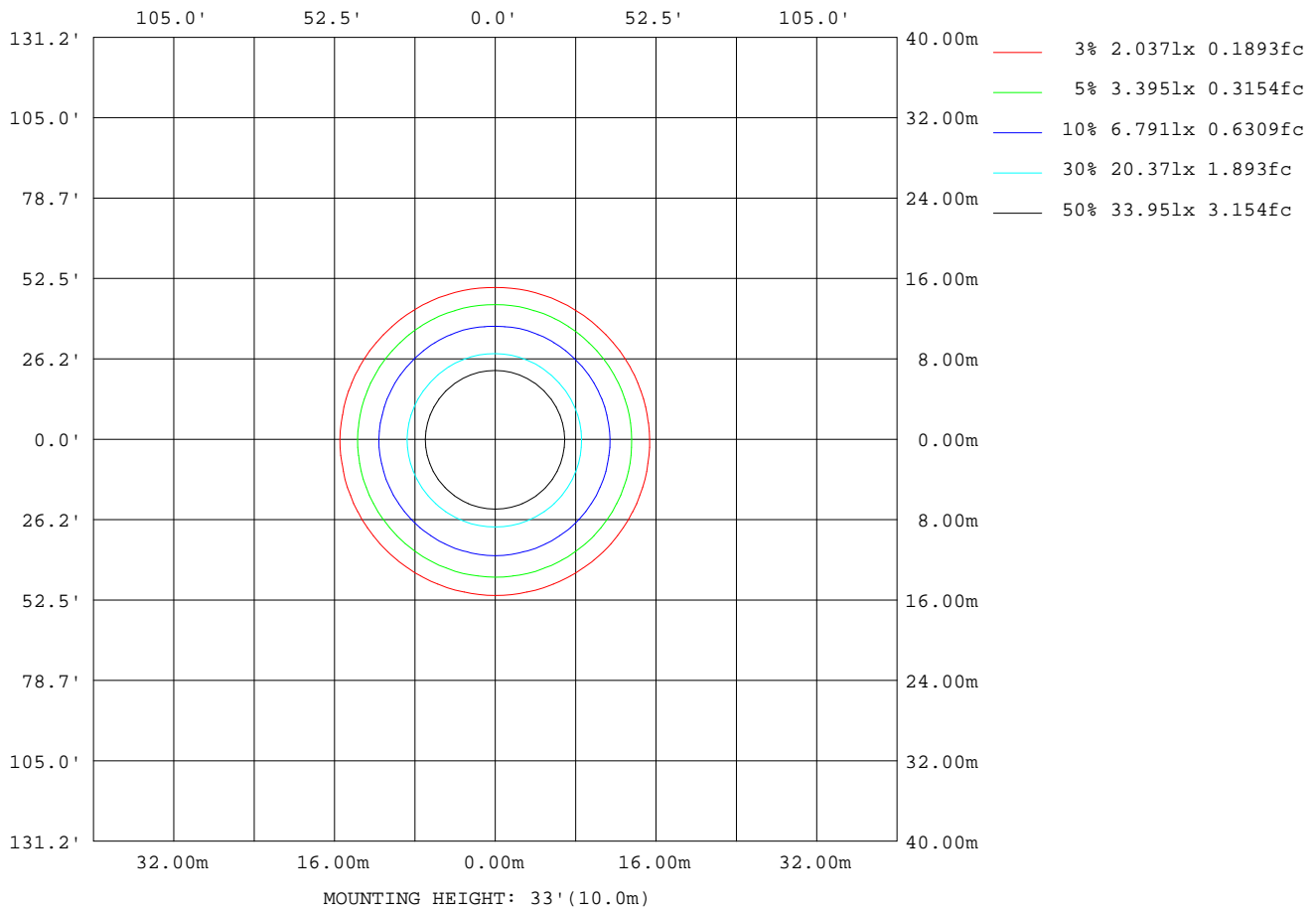
Note:The Curves indicate the illuminated area and the average illumination when the luminaire is at different distance.

C Range: 0 - 360DEG  
 C Interval: 45.0DEG  
 Test Speed: HIGH  
 Temperature:25.3DEG  
 Operators:007  
 Test Date:2016-08-19

γ Range: 0 - 180DEG  
 γ Interval: 1.0DEG  
 Test System:EVERFINE GO-2000B\_V1 SYSTEM V2.0.362  
 Humidity:65.0%  
 Test Distance:5.560m [K=1.0000]  
 Remarks: HBL-100-90

**ISOLUX DIAGRAM**

Test:U:220.0V I:0.4540A P:98.80W PF:0.9800 Freq:50.00Hz Lamp Flux:14790.4x1 lm		
NAME:	TYPE:LED	WEIGHT:4.8KG
SPEC.:	DIM.: 300*300*190	SERIAL No.:
MFR.:	SUR.:0.1275*0.1275*3.14	Shielding Angle:120



C Range: 0 - 360DEG  
 C Interval: 45.0DEG  
 Test Speed: HIGH  
 Temperature:25.3DEG  
 Operators:007  
 Test Date:2016-08-19

$\gamma$  Range: 0 - 180DEG  
 $\gamma$  Interval: 1.0DEG  
 Test System:EVERFINE GO-2000B\_V1 SYSTEM V2.0.362  
 Humidity:65.0%  
 Test Distance:5.560m [K=1.0000]  
 Remarks: HBL-100-90

LED Avg.L Report

Test:U:220.0V I:0.4540A P:98.80W PF:0.9800 Freq:50.00Hz Lamp Flux:14790.4x1 lm		
NAME:	TYPE:LED	WEIGHT:4.8KG
SPEC.:	DIM.: 300*300*190	SERIAL No.:
MFR.:	SUR.:0.1275*0.1275*3.14	Shielding Angle:120

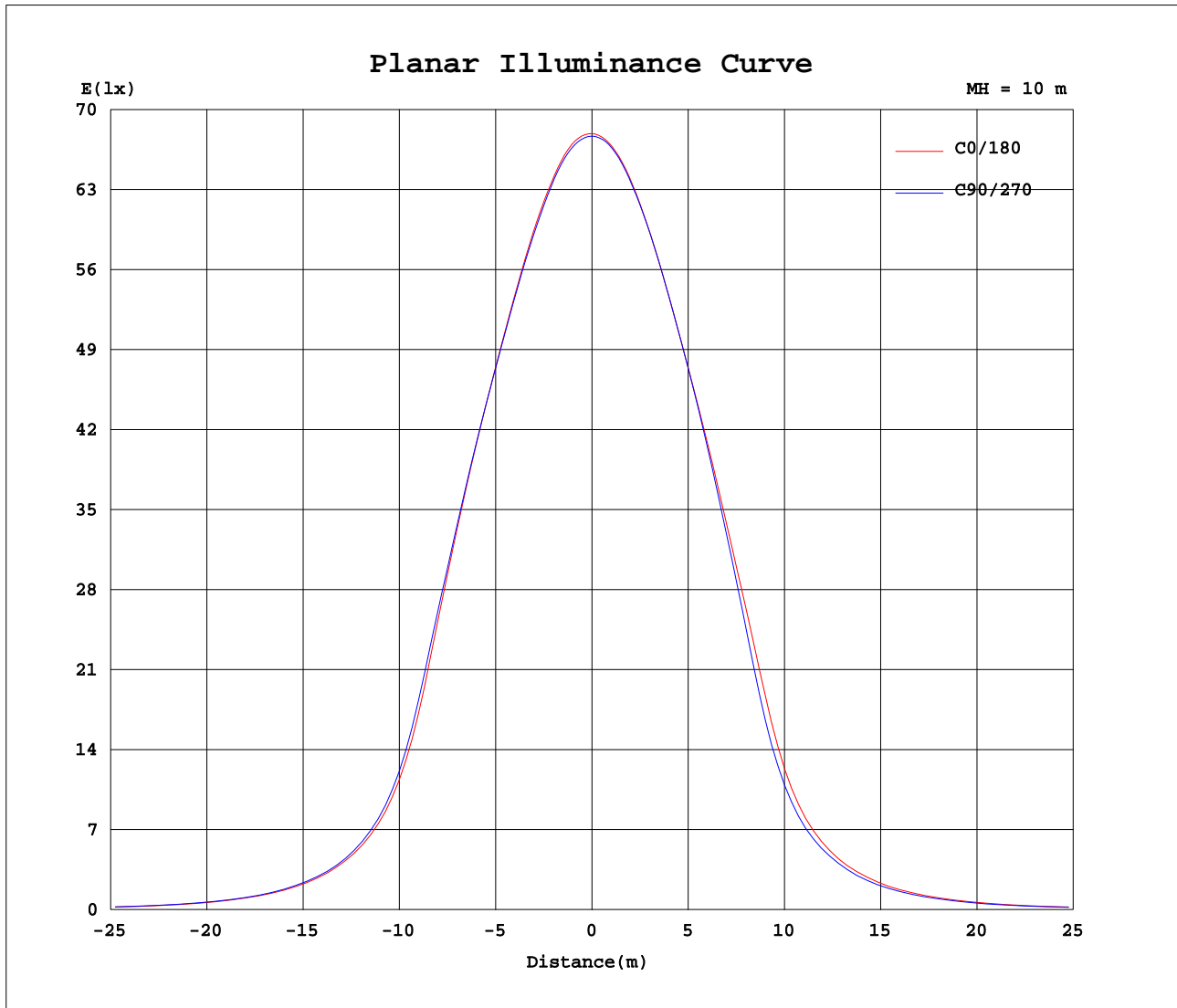
AvgL	cd/m2
L_0~180(65)av	28148
L_0~180(75)av	12517
L_0~180(85)av	3884
L_90~270(65)av	27588
L_90~270(75)av	12676
L_90~270(85)av	4149
L_45(65)av	27734
L_45(75)av	12592
L_45(85)av	4059

Standard: GB/T 29293-2012

C Range: 0 - 360DEG  
 C Interval: 45.0DEG  
 Test Speed: HIGH  
 Temperature:25.3DEG  
 Operators:007  
 Test Date:2016-08-19

γ Range: 0 - 180DEG  
 γ Interval: 1.0DEG  
 Test System:EVERFINE GO-2000B\_V1 SYSTEM V2.0.362  
 Humidity:65.0%  
 Test Distance:5.560m [K=1.0000]  
 Remarks: HBL-100-90

Planar Illuminance Curve



C Range: 0 - 360DEG  
 C Interval: 45.0DEG  
 Test Speed: HIGH  
 Temperature: 25.3DEG  
 Operators: 007  
 Test Date: 2016-08-19

$\gamma$  Range: 0 - 180DEG  
 $\gamma$  Interval: 1.0DEG  
 Test System: EVERFINE GO-2000B\_V1 SYSTEM V2.0.362  
 Humidity: 65.0%  
 Test Distance: 5.560m [K=1.0000]  
 Remarks: HBL-100-90

LUMINOUS DISTRIBUTION INTENSITY DATA

Test:U:220.0V I:0.4540A P:98.80W PF:0.9800 Freq:50.00Hz Lamp Flux:14790.4x1 lm		
NAME:	TYPE:LED	WEIGHT:4.8KG
SPEC.:	DIM.: 300*300*190	SERIAL No.:
MFR.:	SUR.:0.1275*0.1275*3.14	Shielding Angle:120

Table--1

UNIT: cd

C(DEG)\ γ (DEG)	0	45	90	135	180	225	270	315											
0	6791	6778	6769	6759	6791	6778	6769	6759											
5	6803	6788	6772	6758	6786	6776	6772	6768											
10	6798	6789	6769	6755	6781	6772	6764	6764											
15	6782	6771	6742	6728	6756	6753	6751	6758											
20	6743	6741	6716	6705	6719	6726	6724	6736											
25	6668	6671	6650	6642	6652	6663	6654	6669											
30	6518	6535	6524	6509	6520	6496	6482	6486											
35	6057	6115	6122	6097	6129	5993	5957	5927											
40	4909	5067	5138	5125	5204	4867	4747	4659											
45	3217	3390	3431	3449	3492	3204	3086	3062											
50	2142	2258	2260	2246	2253	2105	2030	2037											
55	1459	1537	1531	1514	1517	1412	1365	1374											
60	967	1010	1012	1002	988	934	899	909											
65	605	633	641	624	609	572	548	561											
70	347	369	378	364	344	322	311	325											
75	163	181	188	182	168	151	147	151											
80	64.2	72.4	76.9	74.7	66.2	59.0	56.3	59.1											
85	16.1	21.1	23.3	23.0	18.4	14.4	13.6	13.6											
90	3.55	3.30	3.24	3.22	1.52	1.62	1.61	1.61											
95	5.51	5.16	5.03	5.03	2.41	2.54	2.53	2.54											
100	8.53	7.90	7.69	7.68	3.74	3.96	3.95	3.96											
105	12.3	11.6	11.3	11.3	5.74	6.03	6.08	6.06											
110	17.2	16.1	15.7	15.8	8.53	8.94	8.98	8.93											
115	22.3	21.3	21.0	21.0	12.1	12.5	12.6	12.5											
120	27.6	26.7	26.5	26.5	16.2	16.6	16.8	16.6											
125	32.9	32.1	32.6	32.2	20.7	21.0	21.4	21.1											
130	38.0	37.3	37.8	37.4	25.2	25.4	25.9	25.7											
135	42.4	42.2	42.3	41.7	29.5	29.5	30.2	29.9											
140	46.1	46.3	46.0	45.6	33.4	33.3	34.2	33.5											
145	49.3	50.1	49.2	49.0	37.3	36.9	38.2	37.4											
150	51.8	53.3	52.0	51.6	40.5	40.3	41.1	40.6											
155	53.9	54.7	54.6	54.1	43.6	42.9	44.1	43.7											
160	57.1	57.2	57.3	57.1	46.0	45.3	46.2	46.3											
165	59.8	59.8	59.6	59.4	51.5	51.1	52.3	52.1											
170	63.9	62.5	62.5	62.3	58.3	57.6	58.7	58.5											
175	65.7	64.4	64.4	64.4	62.9	63.2	63.1	62.5											
180	66.1	65.5	65.5	66.1	66.4	65.3	66.5	65.6											

C Range: 0 - 360DEG  
 C Interval: 45.0DEG  
 Test Speed: HIGH  
 Temperature:25.3DEG  
 Operators:007  
 Test Date:2016-08-19

γ Range: 0 - 180DEG  
 γ Interval: 1.0DEG  
 Test System:EVERFINE GO-2000B\_V1 SYSTEM V2.0.362  
 Humidity:65.0%  
 Test Distance:5.560m [K=1.0000]  
 Remarks: HBL-100-90