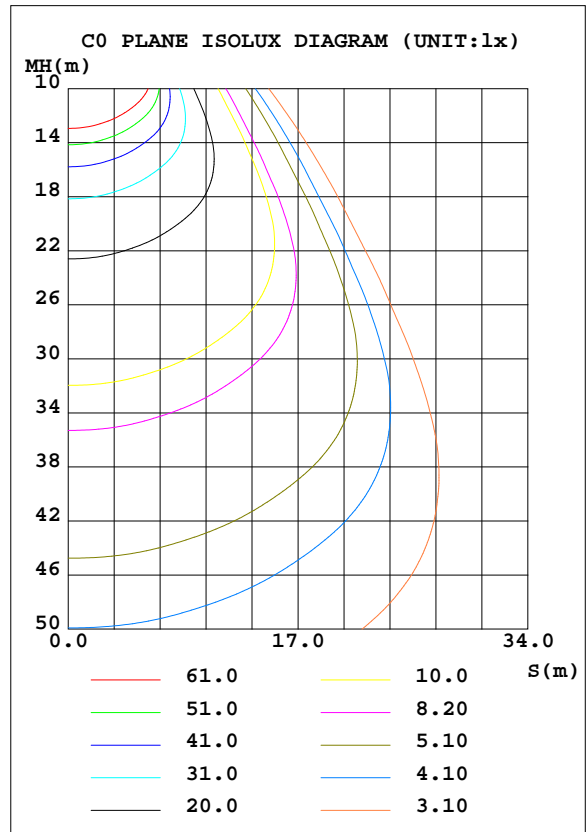
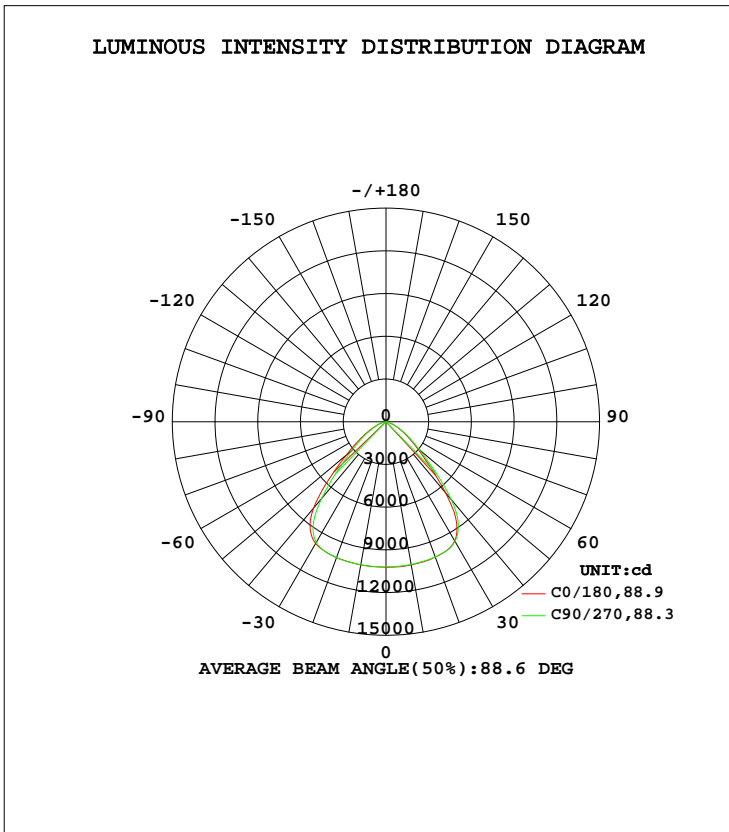


LUMINAIRE PHOTOMETRIC TEST REPORT

Test:U:220.0V I:0.6800A P:146.2W PF:1.000 Freq:50.00Hz Lamp Flux:22076.2x1 lm		
NAME:	TYPE:LED	WEIGHT:4.8
SPEC.:	DIM.: 300*300*190	SERIAL No.:
MFR.:	SUR.:0.1275*0.1275*3.14	Shielding Angle:120

DATA OF LAMP		PHOTOMETRIC DATA Eff: 151 lm/W			
MODEL		I _{max} (cd)	10226	S/MH(C0/180)	1.32
NOMINAL POWER(W)	0150	LOR(%)	100.0	S/MH(C90/270)	1.27
RATED VOLTAGE(V)	220	TOTAL FLUX(lm)	22076	η UP, DN(C0-180)	0.6,48.8
NOMINAL FLUX(lm)	22076.2	CIE CLASS	DIRECT	η UP, DN(C180-360)	0.4,50.1
LAMPS INSIDE	1	η up(%)	1.1	CIBSE SHR NOM	1.25
TEST VOLTAGE(V)		η down(%)	98.9	CIBSE SHR MAX	1.30



C Range: 0 - 360DEG
 C Interval: 45.0DEG
 Test Speed: HIGH
 Temperature:25.3DEG
 Operators:007
 Test Date:2016-08-18

γ Range: 0 - 180DEG
 γ Interval: 1.0DEG
 Test System:EVERFINE GO-2000B_V1 SYSTEM V2.0.362
 Humidity:65.0%
 Test Distance:5.560m [K=1.0000]
 Remarks: HBL-150-90

ZONAL FLUX DIAGRAM

ZONAL FLUX DIAGRAM:

γ	C0	C45	C90	C135	C180	C225	C270	C315	γ	Φ zone	Φ total	%lum, lamp
10	1020	1019	1018	1017	1021	1021	1020	1019	0- 10	973.5	973.5	4.62,4.62
20	1012	1011	1011	1013	1016	1017	1015	1014	10- 20	2882	3855	18.3,18.3
30	965.2	965.5	970.0	976.6	987.4	986.4	979.0	964.0	20- 30	4627	8483	40.2,40.2
40	650.6	676.2	712.5	744.5	791.7	756.0	703.6	643.1	30- 40	5451	13934	66.1,66.1
50	283.6	295.4	312.2	344.8	361.8	342.2	314.5	290.0	40- 50	3774	17708	83.9,83.9
60	126.3	127.2	138.3	153.6	159.2	153.7	141.6	127.8	50- 60	1948	19656	93.2,93.2
70	43.49	43.28	49.64	56.77	57.78	57.62	51.57	44.75	60- 70	892.8	20549	97.4,97.4
80	7.763	8.228	10.19	12.77	12.87	12.11	10.16	8.211	70- 80	283.3	20832	98.8,98.8
90	0.5716	0.5435	0.5022	0.4523	0.2267	0.2059	0.2178	0.2470	80- 90	39.36	20872	98.9,98.9
100	1.335	1.269	1.166	1.063	0.4818	0.5005	0.5378	0.5952	90-100	6.389	20878	99,99
110	2.618	2.520	2.358	2.195	1.112	1.149	1.228	1.318	100-110	13.74	20892	99,99
120	4.186	4.085	3.910	3.723	2.171	2.217	2.337	2.435	110-120	24.24	20916	99.2,99.2
130	5.676	5.613	5.463	5.284	3.468	3.494	3.640	3.708	120-130	34.37	20950	99.3,99.3
140	6.844	6.829	6.705	6.570	4.644	4.629	4.828	4.840	130-140	39.83	21290	99.5,99.5
150	7.666	7.721	7.622	7.514	5.675	5.736	5.954	5.943	140-150	39.17	21669	99.7,99.7
160	8.520	8.557	8.439	8.341	6.533	6.521	6.754	6.826	150-160	32.98	21762	99.8,99.8
170	9.332	9.313	9.253	9.152	8.431	8.318	8.536	8.610	160-170	23.01	21985	100,100
180	9.741	9.632	9.648	9.677	9.746	9.587	9.671	9.661	170-180	8.796	22076	100,100
DEG	LUMINOUS INTENSITY:×10cd									UNIT:lm		

Conical surface Flux(90deg): 16888 lm

%lum = 76.5%
%lamp = 76.5%

Conical surface Flux(120deg): 20574 lm

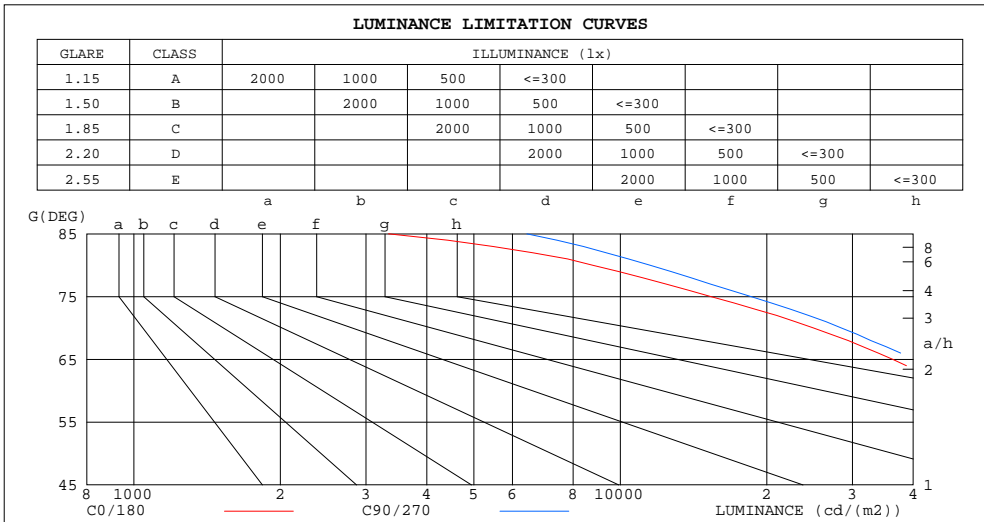
%lum = 93.2%
%lamp = 93.2%

C Range: 0 - 360DEG
C Interval: 45.0DEG
Test Speed: HIGH
Temperature:25.3DEG
Operators:007
Test Date:2016-08-18

γ Range: 0 - 180DEG
γ Interval: 1.0DEG
Test System:EVERFINE GO-2000B_V1 SYSTEM V2.0.362
Humidity:65.0%
Test Distance:5.560m [K=1.0000]
Remarks: HBL-150-90

LUMINANCE LIMITATION CURVES

Test:U:220.0V I:0.6800A P:146.2W PF:1.000 Freq:50.00Hz Lamp Flux:22076.2x1 lm		
NAME:	TYPE:LED	WEIGHT:4.8
SPEC.:	DIM.: 300*300*190	SERIAL No.:
MFR.:	SUR.:0.1275*0.1275*3.14	Shielding Angle:120



LUMINANCE cd/(m2)		
G(DEG)	C0/180	C90/270
85	3339	6424
80	8766	11508
75	15341	18563
70	24932	28458
65	36302	40149
60	49530	54229
55	65571	71395
50	86497	95248
45	117348	132077

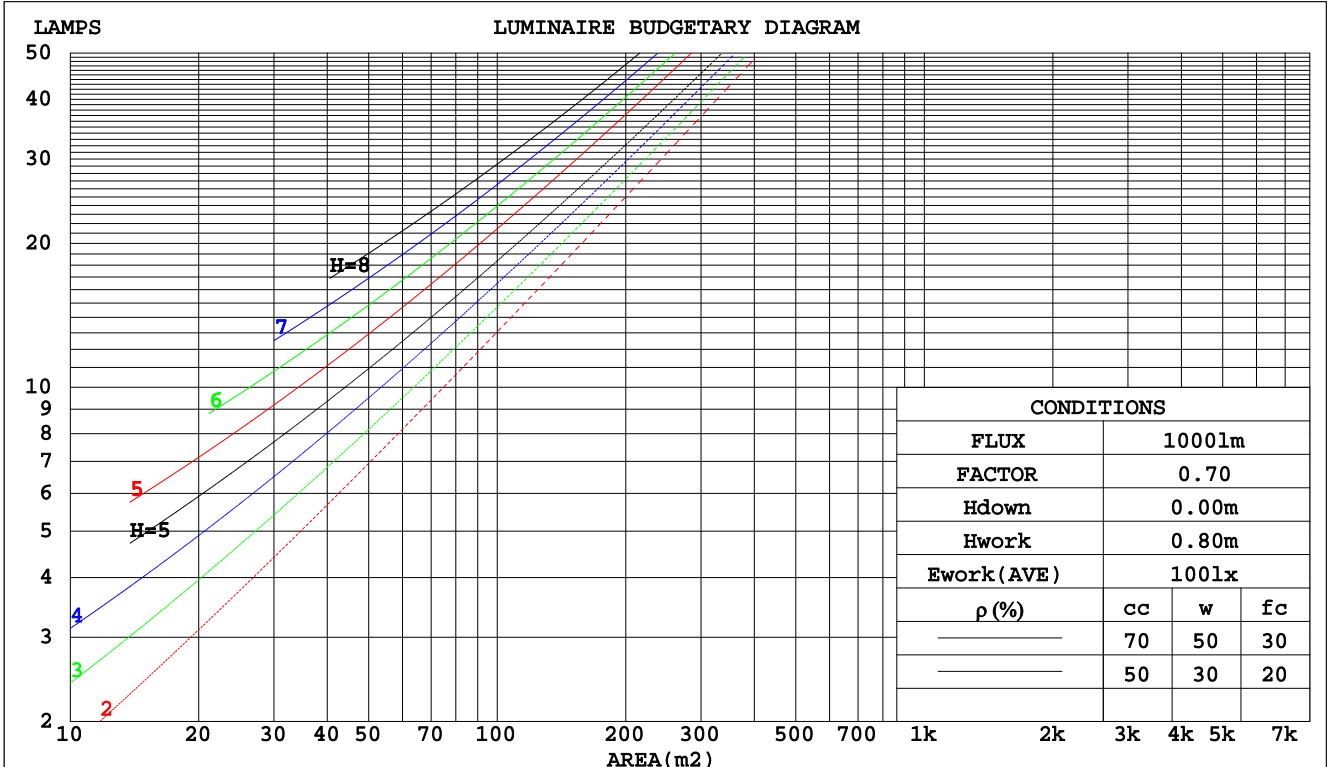
C Range: 0 - 360DEG
 C Interval: 45.0DEG
 Test Speed: HIGH
 Temperature:25.3DEG
 Operators:007
 Test Date:2016-08-18

γ Range: 0 - 180DEG
 γ Interval: 1.0DEG
 Test System:EVERFINE GO-2000B_V1 SYSTEM V2.0.362
 Humidity:65.0%
 Test Distance:5.560m [K=1.0000]
 Remarks: HBL-150-90

CU AND LUMINAIRE BUDGETARY ESTIMATE DIAGRAM

Test:U:220.0V I:0.6800A P:146.2W PF:1.000 Freq:50.00Hz Lamp Flux:22076.2x1 lm		
NAME:	TYPE:LED	WEIGHT:4.8
SPEC.:	DIM.: 300*300*190	SERIAL No.:
MFR.:	SUR.:0.1275*0.1275*3.14	Shielding Angle:120

pcc	80%			70%			50%			30%			10%			0
pw	50%	30%	10%	50%	30%	10%	50%	30%	10%	50%	30%	10%	50%	30%	10%	0
pfc	20%			20%			20%			20%			20%			0
RCR	RCR:Room Cavity Ratio															
	Coefficients of Utilization(CU)															
0.0	1.19	1.19	1.19	1.16	1.16	1.16	1.11	1.11	1.11	1.06	1.06	1.06	1.01	1.01	1.01	.99
1.0	1.08	1.05	1.02	1.05	1.03	.90	1.01	.99	.97	.97	.95	.94	.93	.92	.91	.89
2.0	.97	.92	.87	.95	.90	.86	.92	.88	.84	.88	.85	.82	.85	.83	.80	.78
3.0	.88	.81	.76	.86	.80	.75	.83	.78	.74	.81	.76	.73	.78	.74	.71	.69
4.0	.80	.72	.67	.78	.71	.66	.76	.70	.65	.73	.68	.64	.71	.67	.63	.62
5.0	.72	.65	.59	.71	.64	.59	.69	.63	.58	.67	.62	.57	.65	.61	.57	.55
6.0	.66	.58	.53	.65	.58	.53	.63	.57	.52	.62	.56	.52	.60	.55	.51	.49
7.0	.61	.53	.48	.60	.52	.47	.58	.52	.47	.57	.51	.47	.55	.50	.46	.44
8.0	.56	.48	.43	.55	.48	.43	.54	.47	.43	.52	.47	.42	.51	.46	.42	.40
9.0	.51	.44	.39	.51	.44	.39	.50	.43	.39	.49	.43	.39	.48	.42	.38	.37
10.0	.48	.41	.36	.47	.40	.36	.46	.40	.36	.45	.39	.35	.44	.39	.35	.34



C Range: 0 - 360DEG
 C Interval: 45.0DEG
 Test Speed: HIGH
 Temperature:25.3DEG
 Operators:007
 Test Date:2016-08-18

γ Range: 0 - 180DEG
 γ Interval: 1.0DEG
 Test System:EVERFINE GO-2000B_V1 SYSTEM V2.0.362
 Humidity:65.0%
 Test Distance:5.560m [K=1.0000]
 Remarks: HBL-150-90

WEC AND CCEC

Test:U:220.0V I:0.6800A P:146.2W PF:1.000 Freq:50.00Hz Lamp Flux:22076.2x1 lm		
NAME:	TYPE:LED	WEIGHT:4.8
SPEC.:	DIM.: 300*300*190	SERIAL No.:
MFR.:	SUR.:0.1275*0.1275*3.14	Shielding Angle:120

ρcc	80%			70%			50%			30%			10%			0
ρw	50%	30%	10%	50%	30%	10%	50%	30%	10%	50%	30%	10%	50%	30%	10%	0
ρfc	20%			20%			20%			20%			20%			0
RCR	RCR:Room Cavity Ratio						Wall Exitance Coefficients(WEC)									
0.0																
1.0	.231	.131	.042	.223	.127	.040	.210	.120	.038	.198	.114	.037	.186	.108	.035	
2.0	.225	.123	.038	.219	.120	.037	.207	.115	.036	.196	.110	.034	.186	.105	.033	
3.0	.215	.114	.034	.209	.112	.034	.199	.108	.033	.189	.104	.032	.181	.100	.031	
4.0	.203	.106	.031	.199	.104	.031	.190	.101	.030	.181	.097	.029	.174	.094	.029	
5.0	.192	.098	.028	.188	.097	.028	.180	.094	.028	.173	.091	.027	.166	.089	.027	
6.0	.182	.091	.026	.178	.090	.026	.171	.088	.026	.164	.085	.025	.158	.083	.025	
7.0	.172	.085	.024	.169	.084	.024	.162	.082	.024	.156	.080	.023	.151	.078	.023	
8.0	.163	.080	.022	.160	.079	.022	.154	.077	.022	.149	.075	.022	.144	.074	.022	
9.0	.155	.075	.021	.152	.074	.021	.147	.073	.021	.142	.071	.020	.137	.070	.020	
10.0	.147	.071	.020	.145	.070	.019	.140	.069	.019	.136	.067	.019	.131	.066	.019	

ρcc	80%			70%			50%			30%			10%			0
ρw	50%	30%	10%	50%	30%	10%	50%	30%	10%	50%	30%	10%	50%	30%	10%	0
ρfc	20%			20%			20%			20%			20%			0
RCR	RCR:Room Cavity Ratio						Ceiling Cavity Exitance Coefficients(CCEC)									
0.0	.199	.199	.199	.170	.170	.170	.116	.116	.116	.067	.067	.067	.021	.021	.021	
1.0	.183	.165	.149	.157	.142	.128	.107	.097	.089	.062	.056	.051	.020	.018	.017	
2.0	.171	.140	.114	.147	.121	.099	.101	.084	.069	.058	.049	.040	.019	.016	.013	
3.0	.162	.122	.090	.139	.105	.078	.095	.073	.055	.055	.043	.032	.018	.014	.011	
4.0	.154	.108	.073	.132	.093	.064	.091	.065	.045	.053	.038	.027	.017	.012	.009	
5.0	.146	.097	.061	.126	.084	.053	.087	.059	.038	.050	.035	.022	.016	.011	.007	
6.0	.140	.089	.052	.120	.077	.045	.083	.054	.032	.048	.032	.019	.016	.010	.006	
7.0	.134	.082	.045	.115	.071	.039	.079	.050	.028	.046	.029	.017	.015	.010	.005	
8.0	.128	.076	.040	.110	.066	.035	.076	.046	.025	.044	.027	.015	.014	.009	.005	
9.0	.123	.071	.036	.106	.061	.031	.073	.043	.022	.043	.026	.013	.014	.008	.004	
10.0	.118	.067	.033	.102	.058	.028	.070	.041	.020	.041	.024	.012	.013	.008	.004	

C Range: 0 - 360DEG
 C Interval: 45.0DEG
 Test Speed: HIGH
 Temperature:25.3DEG
 Operators:007
 Test Date:2016-08-18

γ Range: 0 - 180DEG
 γ Interval: 1.0DEG
 Test System:EVERFINE GO-2000B_V1 SYSTEM V2.0.362
 Humidity:65.0%
 Test Distance:5.560m [K=1.0000]
 Remarks: HBL-150-90

UGR(Unified Glare Rating) Table

Test:U:220.0V I:0.6800A P:146.2W PF:1.000 Freq:50.00Hz Lamp Flux:22076.2x1 lm										
NAME:			TYPE:LED				WEIGHT:4.8			
SPEC.:			DIM.: 300*300*190				SERIAL No.:			
MFR.:			SUR.:0.1275*0.1275*3.14				Shielding Angle:120			
ceiling/cavity	0.7	0.7	0.5	0.5	0.3	0.7	0.7	0.5	0.5	0.3
walls	0.5	0.3	0.5	0.3	0.3	0.5	0.3	0.5	0.3	0.3
working plane	0.2	0.2	0.2	0.2	0.2	0.2	0.2	0.2	0.2	0.2
Room dimensions	Viewed crosswise					Viewed endwise				
x = 2H y = 2H	16.0	17.3	16.3	17.5	17.7	16.3	17.6	16.6	17.8	18.0
3H	16.1	17.3	16.4	17.5	17.8	16.5	17.6	16.8	17.9	18.1
4H	16.1	17.2	16.4	17.4	17.7	16.5	17.6	16.8	17.8	18.1
6H	16.0	17.1	16.4	17.3	17.6	16.4	17.4	16.7	17.7	18.0
8H	16.0	17.0	16.3	17.3	17.6	16.4	17.3	16.7	17.6	17.9
12H	16.0	16.9	16.3	17.2	17.5	16.3	17.3	16.7	17.6	17.9
4H 2H	16.0	17.1	16.3	17.4	17.6	16.3	17.4	16.6	17.7	17.9
3H	16.2	17.2	16.6	17.5	17.8	16.5	17.5	16.9	17.8	18.1
4H	16.2	17.1	16.6	17.4	17.7	16.6	17.4	16.9	17.7	18.1
6H	16.2	16.9	16.6	17.3	17.7	16.5	17.3	16.9	17.6	18.0
8H	16.1	16.8	16.6	17.2	17.6	16.5	17.2	16.9	17.6	18.0
12H	16.1	16.7	16.5	17.1	17.5	16.5	17.1	16.9	17.5	17.9
8H 4H	16.1	16.8	16.6	17.2	17.6	16.5	17.2	16.9	17.5	17.9
6H	16.1	16.7	16.6	17.1	17.5	16.5	17.0	16.9	17.4	17.9
8H	16.1	16.6	16.5	17.0	17.5	16.4	16.9	16.9	17.4	17.8
12H	16.0	16.5	16.5	16.9	17.4	16.4	16.8	16.9	17.3	17.8
12H 4H	16.1	16.7	16.5	17.1	17.5	16.4	17.1	16.9	17.5	17.9
6H	16.1	16.6	16.5	17.0	17.5	16.4	16.9	16.9	17.3	17.8
8H	16.0	16.5	16.5	16.9	17.4	16.4	16.8	16.9	17.3	17.8
Variations with the observer position at spacings:										
S = 1.0H	+ 1.4 / - 2.2					+ 1.3 / - 2.1				
1.5H	+ 1.8 / - 1.5					+ 1.7 / - 1.6				
2.0H	+ 2.5 / - 2.4					+ 2.8 / - 2.5				

CIE Pub.117, 21094 lm Total Lamp Luminous Flux Correct (8log(F/F0) = 10.6)

C Range: 0 - 360DEG
 C Interval: 45.0DEG
 Test Speed: HIGH
 Temperature:25.3DEG
 Operators:007
 Test Date:2016-08-18

γ Range: 0 - 180DEG
 γ Interval: 1.0DEG
 Test System:EVERFINE GO-2000B_V1 SYSTEM V2.0.362
 Humidity:65.0%
 Test Distance:5.560m [K=1.0000]
 Remarks: HBL-150-90

UTILIZATION FACTORS TABLE

Test:U:220.0V I:0.6800A P:146.2W PF:1.000 Freq:50.00Hz Lamp Flux:22076.2x1 lm		
NAME:	TYPE:LED	WEIGHT:4.8
SPEC.:	DIM.: 300*300*190	SERIAL No.:
MFR.:	SUR.:0.1275*0.1275*3.14	Shielding Angle:120

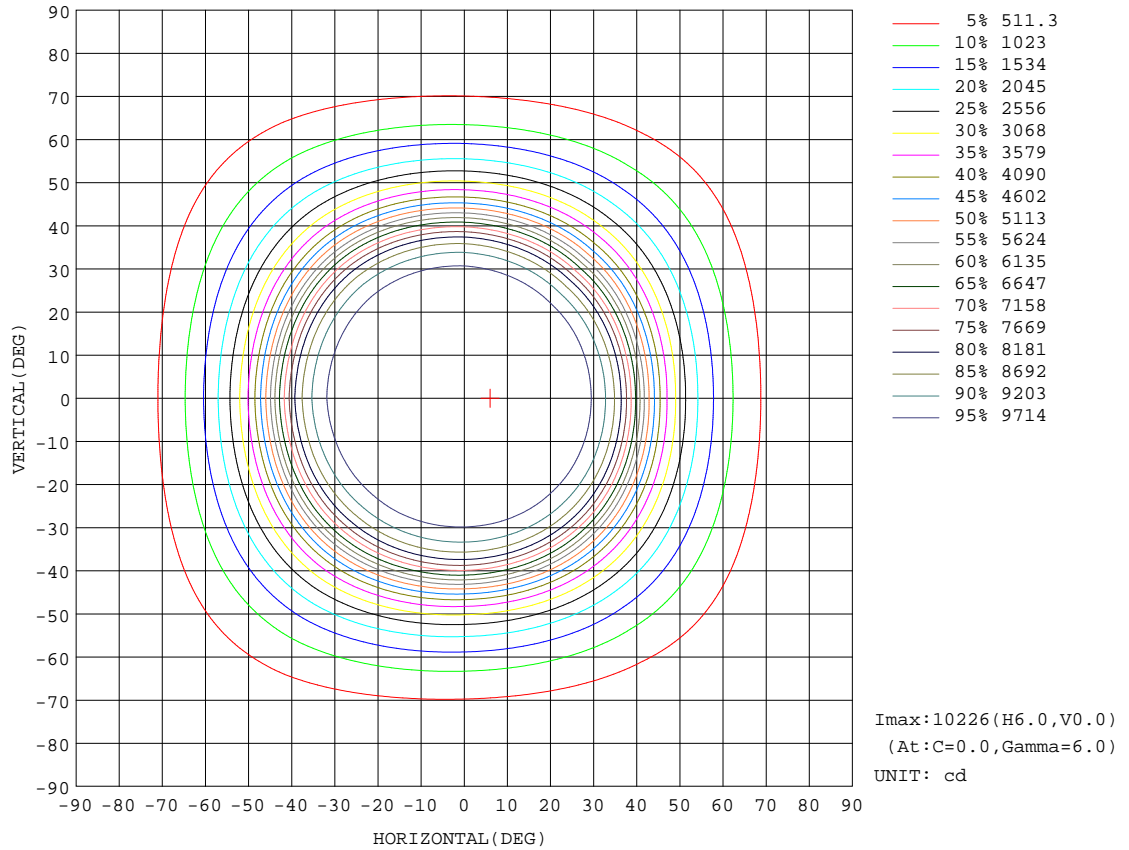
REFLECTANCE										
Ceiling	0.8	0.8	0.8	0.7	0.7	0.7	0.5	0.5	0.5	0
Walls	0.7	0.5	0.3	0.7	0.5	0.3	0.7	0.5	0.3	0
Working plane	0.2	0.2	0.2	0.2	0.2	0.2	0.2	0.2	0.2	0
ROOM INDEX	UTILIZATION FACTORS(PERCENT) $k(RI) \times RCR = 5$									
k = 0.60	70	61	55	69	60	55	68	60	55	50
0.80	80	71	65	79	70	65	77	70	64	59
1.00	87	79	73	86	78	73	84	79	72	67
1.25	93	86	80	92	85	80	90	83	79	73
1.50	97	90	85	96	89	85	93	88	83	77
2.00	102	96	92	101	95	91	97	93	89	83
2.50	105	99	95	103	98	94	100	95	92	85
3.00	107	103	99	105	101	97	102	98	95	88
4.00	110	106	103	108	104	101	104	101	99	90
5.00	112	108	106	109	106	104	105	103	101	92
ROOM INDEX	UF(total)									Direct
According to DIN EN 13032-2 2004			Suspended				SHRNOM = 1.25			

C Range: 0 - 360DEG
 C Interval: 45.0DEG
 Test Speed: HIGH
 Temperature:25.3DEG
 Operators:007
 Test Date:2016-08-18

γ Range: 0 - 180DEG
 γ Interval: 1.0DEG
 Test System:EVERFINE GO-2000B_V1 SYSTEM V2.0.362
 Humidity:65.0%
 Test Distance:5.560m [K=1.0000]
 Remarks: HBL-150-90

ISOCANDELA DIAGRAM

Test:U:220.0V I:0.6800A P:146.2W PF:1.000 Freq:50.00Hz Lamp Flux:22076.2x1 lm		
NAME:	TYPE:LED	WEIGHT:4.8
SPEC.:	DIM.: 300*300*190	SERIAL No.:
MFR.:	SUR.:0.1275*0.1275*3.14	Shielding Angle:120



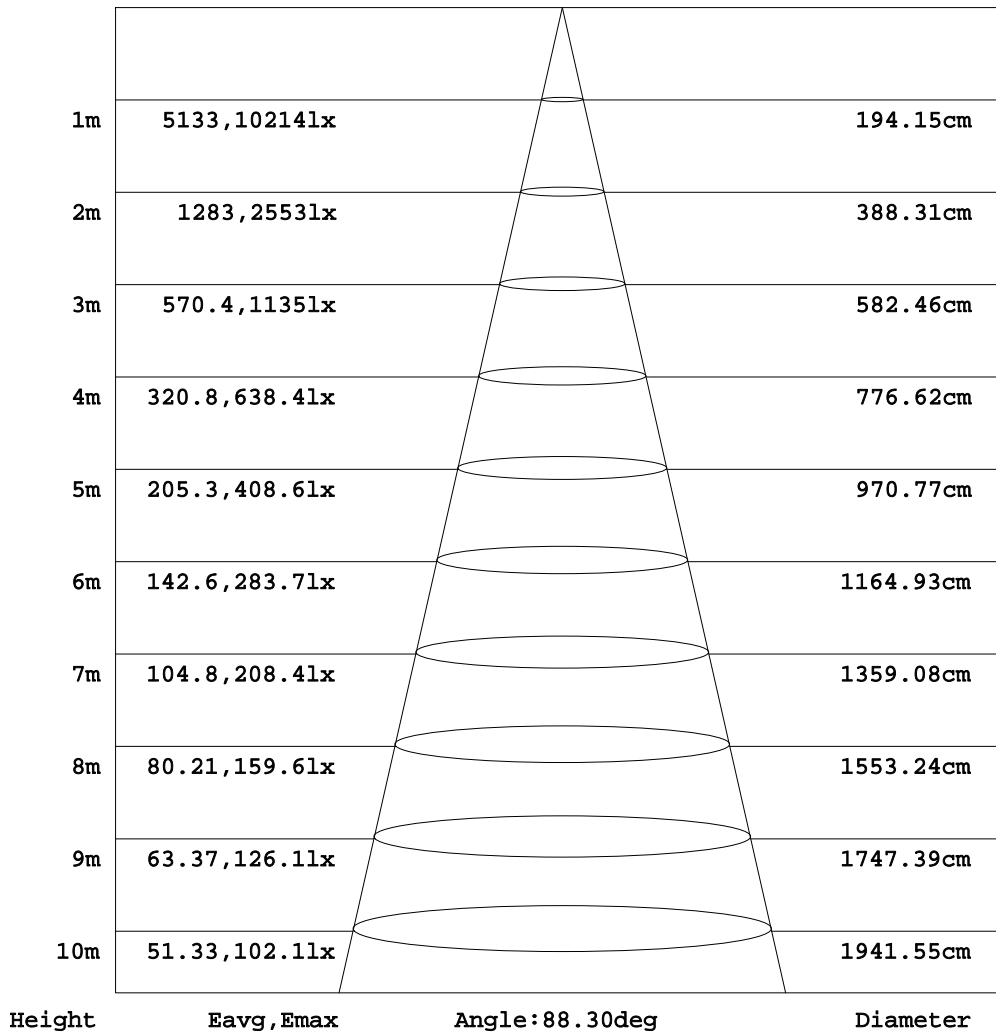
C Range: 0 - 360DEG
 C Interval: 45.0DEG
 Test Speed: HIGH
 Temperature:25.3DEG
 Operators:007
 Test Date:2016-08-18

γ Range: 0 - 180DEG
 γ Interval: 1.0DEG
 Test System:EVERFINE GO-2000B_V1 SYSTEM V2.0.362
 Humidity:65.0%
 Test Distance:5.560m [K=1.0000]
 Remarks: HBL-150-90

AAI Figure

Test:U:220.0V I:0.6800A P:146.2W PF:1.000 Freq:50.00Hz Lamp Flux:22076.2x1 lm		
NAME:	TYPE:LED	WEIGHT:4.8
SPEC.:	DIM.: 300*300*190	SERIAL No.:
MFR.:	SUR.:0.1275*0.1275*3.14	Shielding Angle:120

Flux out:16127 lm



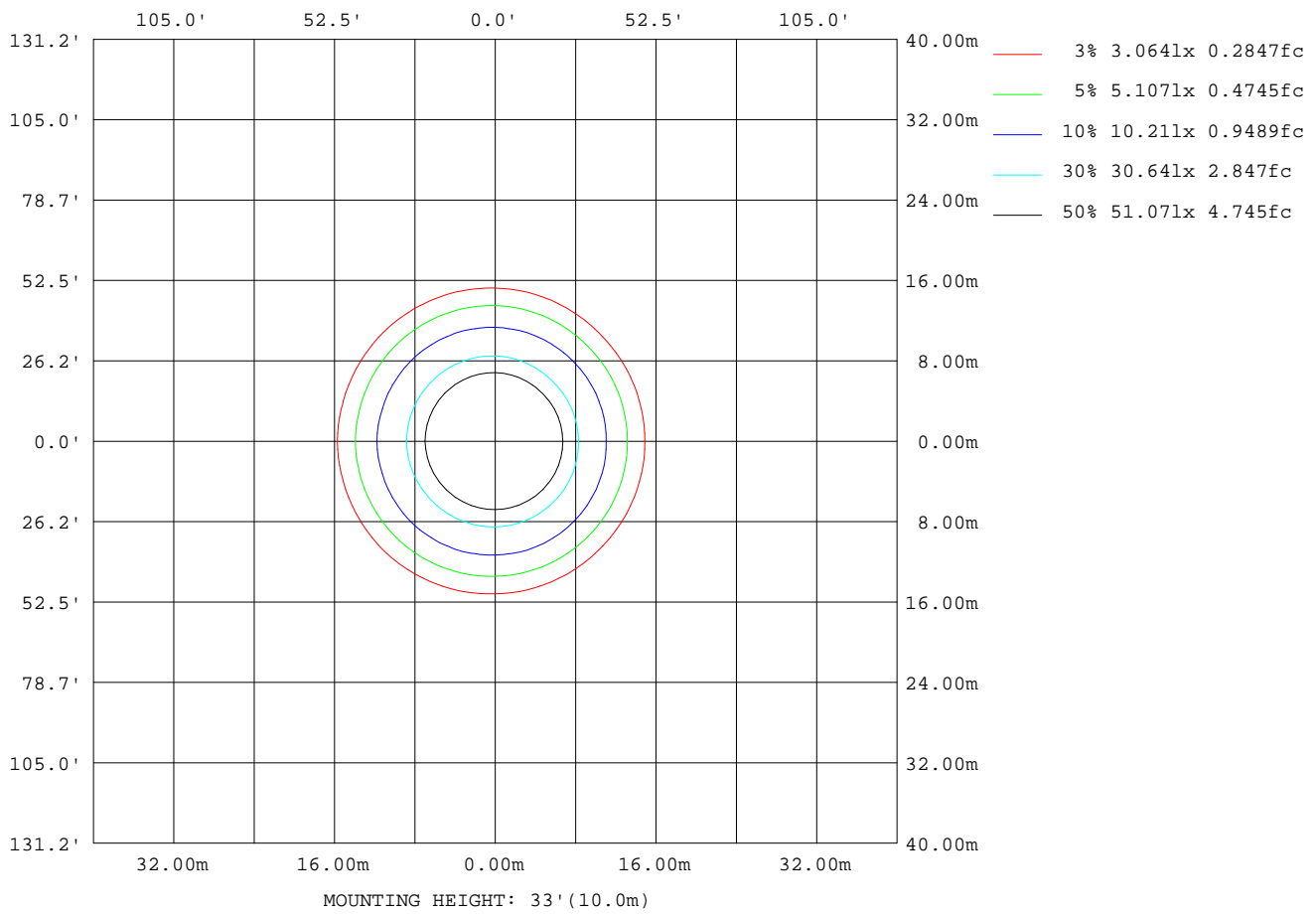
Note:The Curves indicate the illuminated area and the average illumination when the luminaire is at different distance.

C Range: 0 - 360DEG
 C Interval: 45.0DEG
 Test Speed: HIGH
 Temperature:25.3DEG
 Operators:007
 Test Date:2016-08-18

γ Range: 0 - 180DEG
 γ Interval: 1.0DEG
 Test System:EVERFINE GO-2000B_V1 SYSTEM V2.0.362
 Humidity:65.0%
 Test Distance:5.560m [K=1.0000]
 Remarks: HBL-150-90

ISOLUX DIAGRAM

Test:U:220.0V I:0.6800A P:146.2W PF:1.000 Freq:50.00Hz Lamp Flux:22076.2x1 lm		
NAME:	TYPE:LED	WEIGHT:4.8
SPEC.:	DIM.: 300*300*190	SERIAL No.:
MFR.:	SUR.:0.1275*0.1275*3.14	Shielding Angle:120



C Range: 0 - 360DEG
 C Interval: 45.0DEG
 Test Speed: HIGH
 Temperature:25.3DEG
 Operators:007
 Test Date:2016-08-18

γ Range: 0 - 180DEG
 γ Interval: 1.0DEG
 Test System:EVERFINE GO-2000B_V1 SYSTEM V2.0.362
 Humidity:65.0%
 Test Distance:5.560m [K=1.0000]
 Remarks: HBL-150-90

LED Avg.L Report

Test:U:220.0V I:0.6800A P:146.2W PF:1.000 Freq:50.00Hz Lamp Flux:22076.2x1 lm		
NAME:	TYPE:LED	WEIGHT:4.8
SPEC.:	DIM.: 300*300*190	SERIAL No.:
MFR.:	SUR.:0.1275*0.1275*3.14	Shielding Angle:120

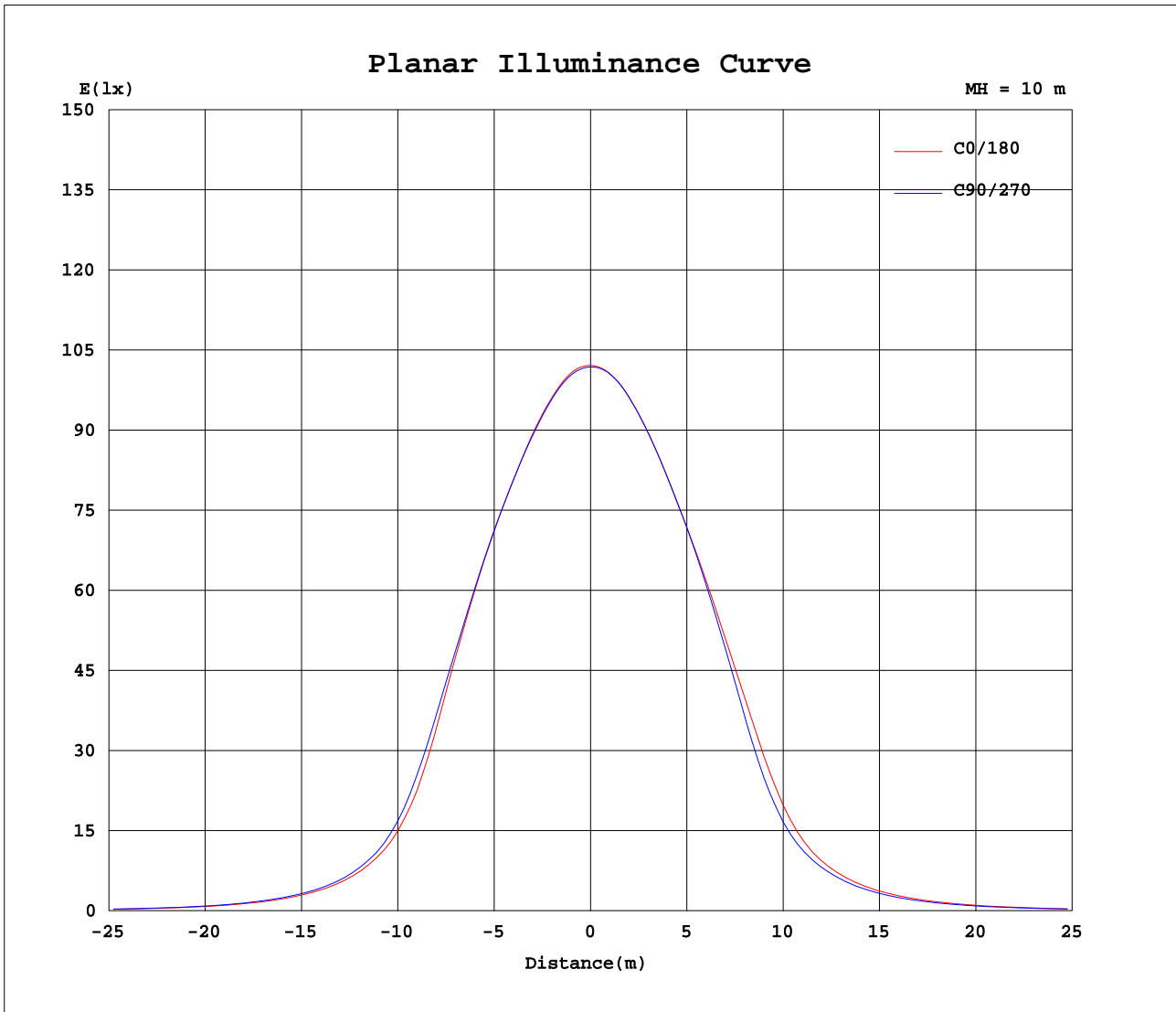
AvgL	cd/m2
L_0~180(65)av	41165
L_0~180(75)av	19004
L_0~180(85)av	6275
L_90~270(65)av	40520
L_90~270(75)av	18921
L_90~270(85)av	6007
L_45(65)av	40676
L_45(75)av	19002
L_45(85)av	6273

Standard: GB/T 29293-2012

C Range: 0 - 360DEG
 C Interval: 45.0DEG
 Test Speed: HIGH
 Temperature:25.3DEG
 Operators:007
 Test Date:2016-08-18

γ Range: 0 - 180DEG
 γ Interval: 1.0DEG
 Test System:EVERFINE GO-2000B_V1 SYSTEM V2.0.362
 Humidity:65.0%
 Test Distance:5.560m [K=1.0000]
 Remarks: HBL-150-90

Planar Illuminance Curve



C Range: 0 - 360DEG
 C Interval: 45.0DEG
 Test Speed: HIGH
 Temperature: 25.3DEG
 Operators: 007
 Test Date: 2016-08-18

γ Range: 0 - 180DEG
 γ Interval: 1.0DEG
 Test System: EVERFINE GO-2000B_V1 SYSTEM V2.0.362
 Humidity: 65.0%
 Test Distance: 5.560m [K=1.0000]
 Remarks: HBL-150-90

LUMINOUS DISTRIBUTION INTENSITY DATA

Test:U:220.0V I:0.6800A P:146.2W PF:1.000 Freq:50.00Hz Lamp Flux:22076.2x1 lm		
NAME:	TYPE:LED	WEIGHT:4.8
SPEC.:	DIM.: 300*300*190	SERIAL No.:
MFR.:	SUR.:0.1275*0.1275*3.14	Shielding Angle:120

Table--1

UNIT: x10cd

C(DEG) γ (DEG)	0	45	90	135	180	225	270	315											
0	1021	1020	1019	1018	1021	1020	1019	1018											
5	1023	1020	1019	1017	1021	1021	1020	1020											
10	1020	1019	1018	1017	1021	1021	1020	1019											
15	1018	1016	1014	1015	1018	1019	1019	1018											
20	1012	1011	1011	1013	1016	1017	1015	1014											
25	1001	1000	1001	1005	1007	1009	1007	1005											
30	965	966	970	977	987	986	979	964											
35	865	874	887	900	927	915	893	854											
40	651	676	712	744	792	756	704	643											
45	423	449	476	518	559	520	471	427											
50	284	295	312	345	362	342	314	290											
55	192	195	209	230	241	231	213	194											
60	126	127	138	154	159	154	142	128											
65	78.2	77.9	86.5	96.7	99.2	96.9	88.1	79.2											
70	43.5	43.3	49.6	56.8	57.8	57.6	51.6	44.7											
75	20.3	20.6	24.5	29.2	29.9	29.5	25.4	21.1											
80	7.76	8.23	10.2	12.8	12.9	12.1	10.2	8.21											
85	1.48	2.01	2.86	4.02	4.09	3.42	2.48	1.70											
90	0.57	0.54	0.50	0.45	0.23	0.21	0.22	0.25											
95	0.89	0.84	0.77	0.70	0.31	0.32	0.34	0.39											
100	1.33	1.27	1.17	1.06	0.48	0.50	0.54	0.60											
105	1.92	1.83	1.70	1.56	0.74	0.77	0.83	0.90											
110	2.62	2.52	2.36	2.20	1.11	1.15	1.23	1.32											
115	3.39	3.29	3.11	2.93	1.59	1.64	1.74	1.84											
120	4.19	4.08	3.91	3.72	2.17	2.22	2.34	2.43											
125	4.96	4.87	4.71	4.52	2.82	2.85	2.99	3.07											
130	5.68	5.61	5.46	5.28	3.47	3.49	3.64	3.71											
135	6.30	6.26	6.13	5.97	4.08	4.08	4.25	4.29											
140	6.84	6.83	6.71	6.57	4.64	4.63	4.83	4.84											
145	7.31	7.33	7.21	7.10	5.19	5.21	5.43	5.42											
150	7.67	7.72	7.62	7.51	5.68	5.74	5.95	5.94											
155	8.06	8.11	8.00	7.91	6.15	6.18	6.40	6.43											
160	8.52	8.56	8.44	8.34	6.53	6.52	6.75	6.83											
165	8.91	8.90	8.82	8.68	7.39	7.34	7.59	7.66											
170	9.33	9.31	9.25	9.15	8.43	8.32	8.54	8.61											
175	9.63	9.58	9.52	9.48	9.21	9.10	9.23	9.30											
180	9.74	9.63	9.65	9.68	9.75	9.59	9.67	9.66											

C Range: 0 - 360DEG
 C Interval: 45.0DEG
 Test Speed: HIGH
 Temperature:25.3DEG
 Operators:007
 Test Date:2016-08-18

γ Range: 0 - 180DEG
 γ Interval: 1.0DEG
 Test System:EVERFINE GO-2000B_V1 SYSTEM V2.0.362
 Humidity:65.0%
 Test Distance:5.560m [K=1.0000]
 Remarks: HBL-150-90